

# Ubiquitin-conjugating enzyme E2 Q2 Polyclonal Antibody

Catalog No: #42667

Orders: [order@signalwayantibody.com](mailto:order@signalwayantibody.com)Support: [tech@signalwayantibody.com](mailto:tech@signalwayantibody.com)

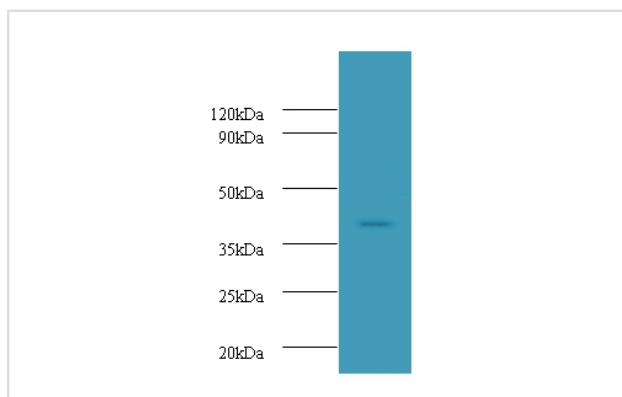
## Description

Product Name	Ubiquitin-conjugating enzyme E2 Q2 Polyclonal Antibody
Host Species	Rabbit
Clonality	Polyclonal
Purification	Caprylic Acid Ammonium Sulfate Precipitation purified
Applications	WB
Species Reactivity	Hu
Specificity	The antibody detects endogenous level of total Ubiquitin-conjugating enzyme E2 Q2 polyclonal antibody.
Immunogen Type	protein
Immunogen Description	Recombinant human Ubiquitin-conjugating enzyme E2 Q2 protein
Target Name	Ubiquitin-conjugating enzyme E2 Q2
Other Names	Ubiquitin carrier protein Q2 Ubiquitin-protein ligase Q2 Gene names UBE2Q2
Accession No.	Swiss-Prot#: Q8WVN8
Uniprot	Q8WVN8
GenID	92912;
Calculated MW	43kd
Formulation	Preservative: 0.03% Proclin 300 Constituents: 50% Glycerol, 0.01M PBS, PH 7.4
Storage	Store at -20°C

## Application Details

Western blotting: □ 1:500 - 1:1000

## Images



All lanes : Ubiquitin-conjugating enzyme E2 Q2 Antibody at 2ug/ml+A431 whole cell lysate  
 Secondary  
 Goat polyclonal to Rabbit IgG at 1/10000 dilution  
 Predicted band size:43kDa  
 Observed band size:43kDa

## Background

Accepts ubiquitin from the E1 complex and catalyzes its covalent attachment to other proteins. In vitro catalyzes 'Lys-48'-linked polyubiquitination.

## References

---

[1] Complete sequencing and characterization of 21,243 full-length human cDNAs. Ota T., Suzuki Y., Nishikawa T., Otsuki T., Sugiyama T., Irie R., Wakamatsu A., Hayashi K., Sato H., Nagai K., Kimura K., Makita H., Sekine M., Obayashi M., Nishi T., Shibahara

---

Note: This product is for in vitro research use only