

Aldose 1-epimerase Polyclonal Antibody

Catalog No: #42669

Orders: order@signalwayantibody.com

Support: tech@signalwayantibody.com

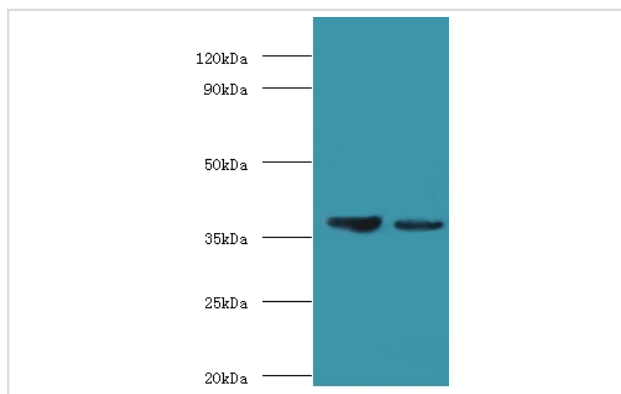
Description

Product Name	Aldose 1-epimerase Polyclonal Antibody
Host Species	Rabbit
Clonality	Polyclonal
Purification	Caprylic Acid Ammonium Sulfate Precipitation purified
Applications	WB
Species Reactivity	Hu
Specificity	The antibody detects endogenous level of total Aldose 1-epimerase polyclonal antibody.
Immunogen Type	protein
Immunogen Description	Recombinant human Aldose 1-epimerase protein
Target Name	Aldose 1-epimerase
Other Names	Galactose mutarotase, GALM, BLOCK25
Accession No.	Swiss-Prot#: Q96C23
Uniprot	Q96C23
GeneID	130589;
Calculated MW	38kd
Formulation	Preservative: 0.03% Proclin 300 Constituents: 50% Glycerol, 0.01M PBS, PH 7.4
Storage	Store at -20°C

Application Details

Western blotting: 1:500 - 1:1000

Images



All lanes:Aldose 1-epimerase antibody at 2ug/ml
 Lane 1:mouse kidney tissue
 Lane 2:rat adrenal gland tissue
 secondary
 Goat polyclonal to rabbit at 1/10000 dilution
 predicted band size :38kDa
 observed band size :38kDa

Background

Mutarotase converts alpha-aldose to the beta-anomer. It is active on D-glucose, L-arabinose, D-xylose, D-galactose, maltose and lactose.

References

[1]"Molecular structure of human galactose mutarotase." Thoden J.B., Timson D.J., Reece R.J., Holden H.M. J. Biol. Chem. 279:23431-23437(2004).

[2]"Initial characterization of the human central proteome."Burkard T.R., Planyavsky M., Kaupe I., Breitwies

Note: This product is for in vitro research use only