

39S ribosomal protein L20, mitochondrial Polyclonal Antibody

Catalog No: #42677

Orders: order@signalwayantibody.comSupport: tech@signalwayantibody.com

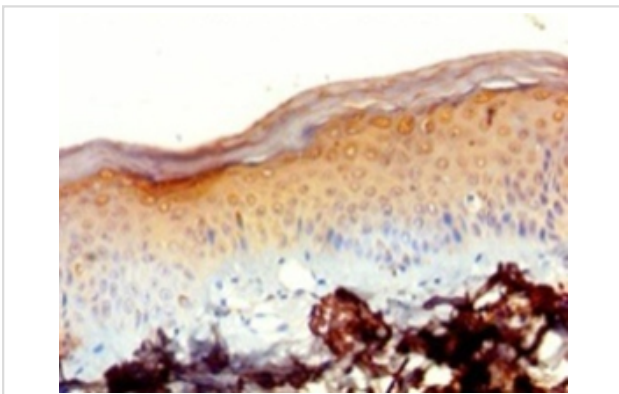
Description

Product Name	39S ribosomal protein L20, mitochondrial Polyclonal Antibody
Host Species	Rabbit
Clonality	Polyclonal
Purification	Caprylic Acid Ammonium Sulfate Precipitation purified
Applications	IHC
Species Reactivity	Hu
Specificity	The antibody detects endogenous level of total 39S ribosomal protein L20, mitochondrial polyclonal antibody.
Immunogen Type	protein
Immunogen Description	Recombinant human 39S ribosomal protein L20, mitochondrial protein(46-149aa)
Target Name	39S ribosomal protein L20, mitochondrial
Other Names	L20mt, MRP-L20, MRPL20
Accession No.	Swiss-Prot:Q9BYC9Gene ID:55052
Uniprot	Q9BYC9
GenID	55052;
Formulation	Preservative: 0.03% Proclin 300 Constituents: 50% Glycerol, 0.01M PBS, PH 7.4
Storage	Store at -20°C

Application Details

Immunohistochemistry: 1:20 - 1:200

Images



Immunohistochemical analysis of paraffin-embedded human skin using #42677 at dilution of 1:100.

References

[1]"Initial characterization of the human central proteome."Burkard T.R., Planyavsky M., Kaupe I., Breitwieser F.P., Buerckstuemmer T., Bennett K.L., Superti-Furga G., Colinge J.BMC Syst. Biol. 5:17-17(2011).

Note: This product is for in vitro research use only