

## IL22 Polyclonal Antibody

Catalog No: #42680

Orders: [order@signalwayantibody.com](mailto:order@signalwayantibody.com)Support: [tech@signalwayantibody.com](mailto:tech@signalwayantibody.com)

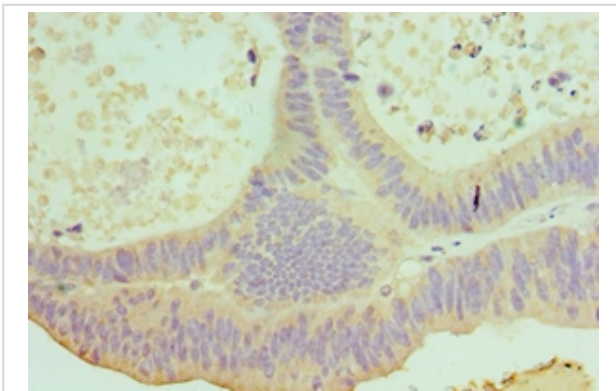
## Description

Product Name	IL22 Polyclonal Antibody
Host Species	Rabbit
Clonality	Polyclonal
Purification	Antigen Affinity Purified
Applications	IHC
Species Reactivity	Hu
Specificity	The antibody detects endogenous level of total IL22 polyclonal antibody.
Immunogen Type	protein
Immunogen Description	Recombinant human Interleukin-22 protein (34-179aa)
Target Name	IL22
Other Names	IL-22, Cytokine Zcyto18, IL-10-related T-cell-derived-inducible factor, IL-TIF, IL22, ILTIF, ZCYTO18
Accession No.	Swiss-Prot#: Q9GZX6
Uniprot	Q9GZX6
GeneID	50616;
Concentration	1.0mg/mL
Formulation	PBS with 0.02% sodium azide, 50% glycerol, pH7.3.
Storage	Store at -20°C

## Application Details

Immunohistochemistry: 1:20 - 1:200

## Images



Immunohistochemical analysis of paraffin-embedded human colon cancer using #42680 at dilution of 1:100.

## Background

Cytokine that contributes to the inflammatory response in vivo.

## References

---

[1]"Structure of IL-22 bound to its high-affinity IL-22R1 chain." Jones B.C., Logsdon N.J., Walter M.R. *Structure* 16:1333-1344(2008). [2]"Structure of insect-cell-derived IL-22." Xu T., Logsdon N.J., Walter M.R. *Acta Crystallogr. D* 61:942-950(2005). [3]"Crystallization and synchrotron X-ray diffraction studies of human interleukin-22." Nagem R.A., Lucchesi K.W., Colau D., Dumoutier L., Renaud J.-C., Polikarpov I. *Acta Crystallogr. D* 58:529-530(2002).

---

Note: This product is for in vitro research use only