

## SPATS2-like protein Polyclonal Antibody

Catalog No: #42681

Orders: order@signalwayantibody.com

Support: tech@signalwayantibody.com

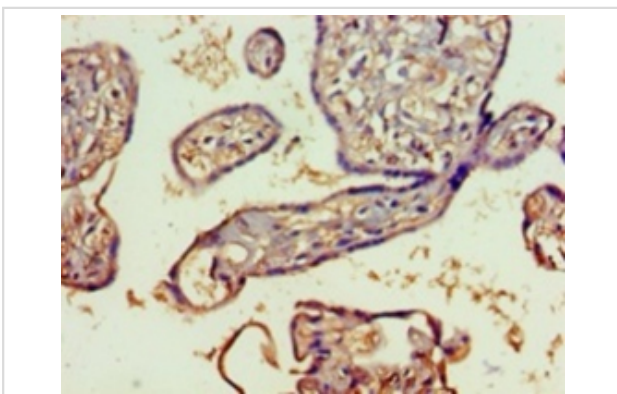
## Description

Product Name	SPATS2-like protein Polyclonal Antibody
Host Species	Rabbit
Clonality	Polyclonal
Purification	Caprylic Acid Ammonium Sulfate Precipitation purified
Applications	IHC
Species Reactivity	Hu
Specificity	The antibody detects endogenous level of total SPATS2-like protein polyclonal antibody.
Immunogen Type	protein
Immunogen Description	Recombinant human SPATS2-like proteinB£B"1-395aaB£B©
Target Name	SPATS2-like protein
Other Names	DNA polymerase-transactivated protein 6, Stress granule and nucleolar protein, SGNP, SPATS2L, DNAPTP6, SP1224
Accession No.	Swiss-Prot#: Q9NUQ6
Uniprot	Q9NUQ6
GeneID	26010;
Formulation	Preservative: 0.03% Proclin 300 Constituents: 50% Glycerol, 0.01M PBS, PH 7.4
Storage	Store at -20°C

## Application Details

Immunohistochemistry: 1:20 - 1:200

## Images



Immunohistochemical analysis of paraffin-embedded human placenta tissue using #42681 at dilution of 1:100.

## References

- [1]"Initial characterization of the human central proteome." Burkard T.R., Planyavsky M., Kaupe I., Breitwieser F.P., Buerckstuemmer T., Bennett K.L., Superti-Furga G., Colinge J. BMC Syst. Biol. 5:17-17(2011). [2]"Lys-N and trypsin cover complementary parts of the phosphoproteome in a refined SCX-based approach." Gauci S., Helbig A.O., Slijper M., Krijgsveld J., Heck A.J., Mohammed S. Anal. Chem. 81:4493-4501(2009). [3]"A quantitative atlas of mitotic phosphorylation." Dephoure N., Zhou C., Villen J., Beausoleil S.A., Bakalarski C.E., Elledge S.J., Gygi S.P. Proc. Natl. Acad. Sci.

---

Note: This product is for in vitro research use only