

## IL21 Polyclonal Antibody

Catalog No: #42683

Orders: [order@signalwayantibody.com](mailto:order@signalwayantibody.com)Support: [tech@signalwayantibody.com](mailto:tech@signalwayantibody.com)

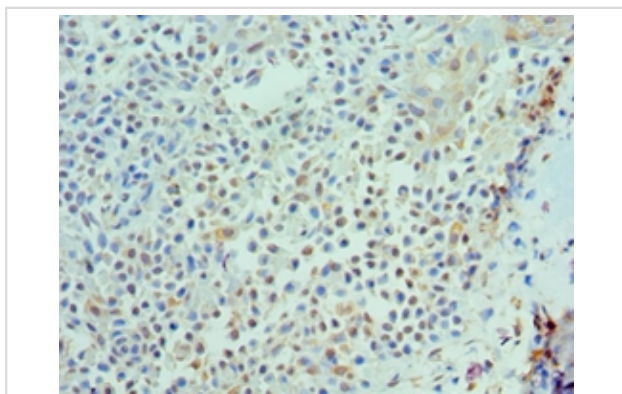
## Description

Product Name	IL21 Polyclonal Antibody
Host Species	Rabbit
Clonality	Polyclonal
Purification	Antigen Affinity Purified
Applications	IHC
Species Reactivity	Hu
Specificity	The antibody detects endogenous level of total IL21 polyclonal antibody.
Immunogen Type	protein
Immunogen Description	Recombinant human Interleukin-21 protein(25-162aa)
Target Name	IL21
Other Names	IL-21, Za11, IL21
Accession No.	Swiss-Prot#: Q9HBE4
Uniprot	Q9HBE4
GeneID	59067;
Concentration	1.0mg/mL
Formulation	PBS with 0.02% sodium azide, 50% glycerol, pH7.3.
Storage	Store at -20°C

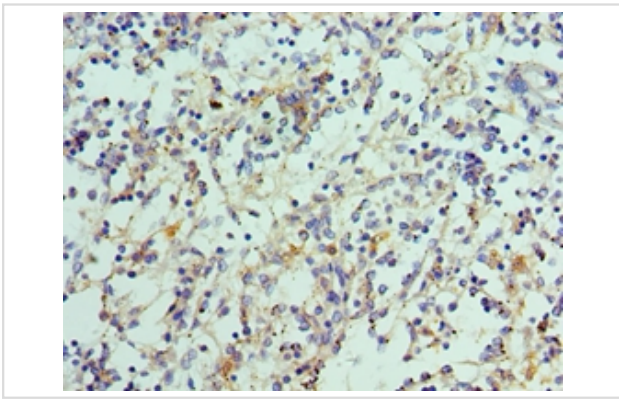
## Application Details

Immunohistochemistry: 1:20 - 1:200

## Images



Immunohistochemical analysis of paraffin-embedded human breast cancer using #42683 at dilution of 1:100.



Immunohistochemical analysis of paraffin-embedded human spleen using #42683 at dilution of 1:100.

## Background

Cytokine with immunoregulatory activity. May promote the transition between innate and adaptive immunity. Induces the production of IgG1 and IgG3 in B-cells (By similarity). May play a role in proliferation and maturation of natural killer (NK) cells in synergy with IL15. May regulate proliferation of mature B- and T-cells in response to activating stimuli. In synergy with IL15 and IL18 stimulates interferon gamma production in T-cells and NK cells. During T-cell mediated immune response may inhibit dendritic cells (DC) activation and maturation.

## References

[1]"Early-onset inflammatory bowel disease and common variable immunodeficiency-like disease caused by IL-21 deficiency."Salzer E., Kansu A., Sic H., Majek P., Ikinogullari A., Dogu F.E., Prengemann N.K., Santos-Valente E., Pickl W.F., Bilic I., Ban S.A., Kuloglu Z., Demir A.M., Ensari A., Colinge J., Rizzi M., Eibel H., Boztug K.J. *Allergy Clin. Immunol.* 133:1651-1660(2014). [2]"Crystal structure of interleukin-21 receptor (IL-21R) bound to IL-21 reveals that sugar chain interacting with WSXWS motif is integral part of IL-21R." Hamming O.J., Kang L., Svensson A., Karlsen J.L., Rahbek-Nielsen H., Paludan S.R., Hjorth S.A., Bondensgaard K., Hartmann R.J. *Biol. Chem.* 287:9454-9460(2012). [3]"The existence of multiple conformers of interleukin-21 directs engineering of a superpotent analogue."Bondensgaard K., Breinholt J., Madsen D., Omkvist D.H., Kang L., Worsaae A., Becker P., Schioedt C.B., Hjorth S.A.J. *Biol. Chem.* 282:23326-23336(2007).

Note: This product is for in vitro research use only