

Leucine-rich repeat-containing protein 40 Polyclonal Antibody

Catalog No: #42688

Orders: order@signalwayantibody.com

Support: tech@signalwayantibody.com

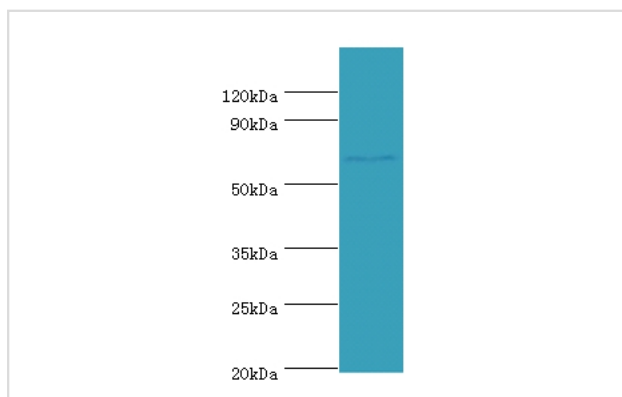
Description

Product Name	Leucine-rich repeat-containing protein 40 Polyclonal Antibody
Host Species	Rabbit
Clonality	Polyclonal
Purification	Caprylic Acid Ammonium Sulfate Precipitation purified
Applications	WB
Species Reactivity	Hu
Specificity	The antibody detects endogenous level of total Leucine-rich repeat-containing protein 40 polyclonal antibody.
Immunogen Type	protein
Immunogen Description	Recombinant human Leucine-rich repeat-containing protein 40 protein
Target Name	Leucine-rich repeat-containing protein 40
Other Names	LRRC40
Accession No.	Swiss-Prot#: Q9H9A6
Uniprot	Q9H9A6
GenID	55631;
Calculated MW	68kd
Formulation	Preservative: 0.03% Proclin 300 Constituents: 50% Glycerol, 0.01M PBS, PH 7.4
Storage	Store at -20°C

Application Details

Western blotting: □1:500 - 1:1000

Images



All lanes: Leucine-rich repeat-containing protein 40 antibody at 2ug/ml+293T whole cell lysate secondary
Goat polyclonal to rabbit at 1/10000 dilution
predicted band size :68kDa
observed band size :68kDa

References

[1] Complete sequencing and characterization of 21,243 full-length human cDNAs. Ota T., Suzuki Y., Nishikawa T., Otsuki T., Sugiyama T., Irie R., Wakamatsu A., Hayashi K., Sato H., Nagai K., Kimura K., Makita H., Sekine M., Obayashi M., Nishi T., Shibahara

Note: This product is for in vitro research use only