

CLIC3 antibody

Catalog No: #22792

Orders: order@signalwayantibody.com

Support: tech@signalwayantibody.com

Description

Product Name	CLIC3 antibody
Host Species	Rabbit
Clonality	Polyclonal
Purification	Purified by antigen-affinity chromatography.
Applications	WB IHC
Species Reactivity	Hu
Immunogen Type	Recombinant protein
Immunogen Description	Recombinant protein fragment contain a sequence corresponding to a region within amino acids 1 and 220 of Human CLIC3
Target Name	CLIC3
Accession No.	Swiss-Prot:O95833Gene ID:9022
Uniprot	O95833
GeneID	9022;
Concentration	0.7mg/ml
Formulation	Supplied in 0.1M Tris-buffered saline with 10% Glycerol (pH7.0). 0.01% Thimerosal was added as a preservative.
Storage	Store at -20°C for long term preservation (recommended). Store at 4°C for short term use.

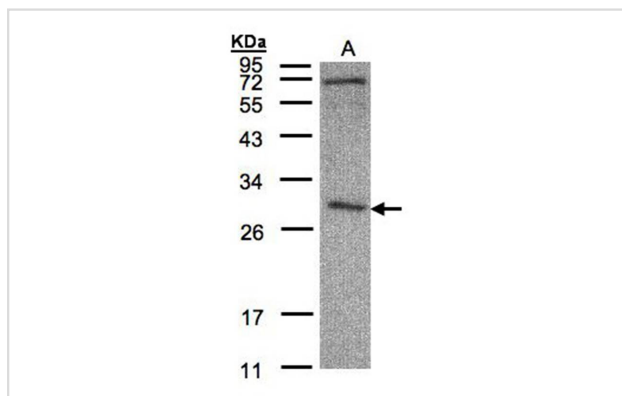
Application Details

Predicted MW: 27kd

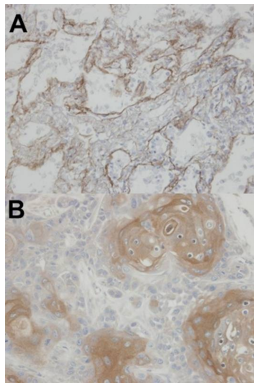
Western blotting: 1:500-1:3000

Immunohistochemistry: 1:100-1:250

Images



Sample(30 ug of whole cell lysate)
A: HeLa S3
12% SDS PAGE
Primary antibody diluted at 1: 500



A: Immunohistochemical analysis of paraffin-embedded T(IV)(lung CA), using CLIC3 antibody at 1: 100 dilution.
B: Immunohistochemical analysis of paraffin-embedded Ca922 xenograft, using CLIC3 antibody at 1: 100 dilution.

Background

Chloride channels are a diverse group of proteins that regulate fundamental cellular processes including stabilization of cell membrane potential, transepithelial transport, maintenance of intracellular pH, and regulation of cell volume. Chloride intracellular channel 3 is a member of the p64 family and is predominantly localized in the nucleus and stimulates chloride ion channel activity. In addition, this protein may participate in cellular growth control, based on its association with ERK7, a member of the MAP kinase family. [provided by RefSeq]

Note: This product is for in vitro research use only