

## Actin-like protein 7A Polyclonal Antibody

Catalog No: #42698

Orders: order@signalwayantibody.com

Support: tech@signalwayantibody.com

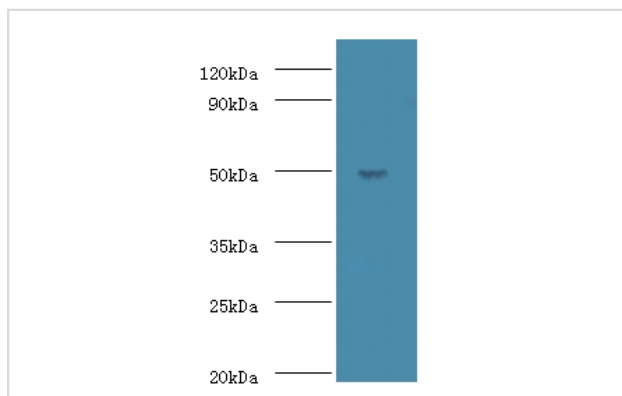
## Description

Product Name	Actin-like protein 7A Polyclonal Antibody
Host Species	Rabbit
Clonality	Polyclonal
Purification	Caprylic Acid Ammonium Sulfate Precipitation purified
Applications	WB IHC
Species Reactivity	Hu
Specificity	The antibody detects endogenous level of total Actin-like protein 7A polyclonal antibody.
Immunogen Type	protein
Immunogen Description	Recombinant human Actin-like protein 7A protein
Target Name	Actin-like protein 7A
Other Names	Actin-like-7-alpha ACTL7A
Accession No.	Swiss-Prot#: Q9Y615
Uniprot	Q9Y615
GeneID	10881;
Calculated MW	49kd
Formulation	Preservative: 0.03% Proclin 300 Constituents: 50% Glycerol, 0.01M PBS, PH 7.4
Storage	Store at -20°C

## Application Details

Western blotting: □ 1:500 - 1:1000

## Images



All lanes: Actin-like protein 7A antibody at 2ug/ml + mouse liver tissue  
 secondary  
 Goat polyclonal to rabbit at 1/10000 dilution  
 predicted band size :49kDa  
 observed band size :49kDa

## Background

Interacts (via N-terminus) with TES (via LIM domain 2). Heterodimer with TES; the heterodimer interacts with ENAH to form a heterotrimer.

## References

---

[1]Cloning, mapping, and expression of two novel actin genes, actin-like-7A (ACTL7A) and actin-like-7B (ACTL7B), from the familial dysautonomia candidate region on 9q31.Chadwick B.P., Mull J., Helbling L.A., Gill S., Leyne M., Robbins C.M., Pinkett H.W.,

---

Note: This product is for in vitro research use only