

CCL25 Antibody

Catalog No: #42700

Orders: order@signalwayantibody.comSupport: tech@signalwayantibody.com

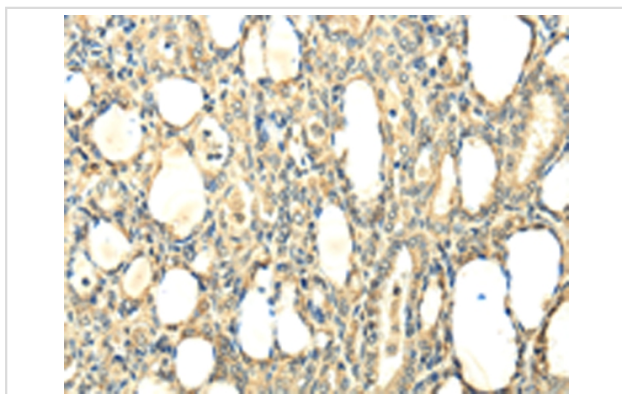
Description

Product Name	CCL25 Antibody
Host Species	Rabbit
Clonality	Polyclonal
Purification	Antigen affinity purification.
Applications	IHC
Species Reactivity	Hu
Specificity	The antibody detects endogenous levels of total CCL25 protein.
Immunogen Type	protein
Immunogen Description	Fusion protein of human CCL25
Target Name	CCL25
Other Names	TECK; Ckb15; SCYA25
Accession No.	Swiss-Prot#: O15444Gene ID: 6370
Uniprot	O15444
GeneID	6370;
Concentration	1.2mg/ml
Formulation	Rabbit IgG in pH7.4 PBS, 0.05% NaN ₃ , 40% Glycerol.
Storage	Store at -20°C

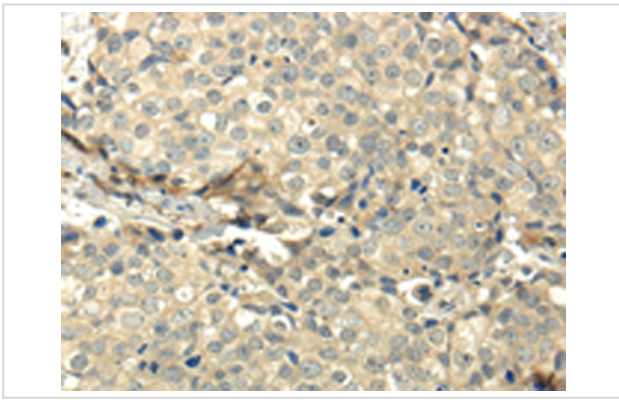
Application Details

Immunohistochemistry: 1:25-1:100

Images



Immunohistochemical analysis of paraffin-embedded Human thyroid cancer tissue using #42700 at dilution 1/20.



Immunohistochemical analysis of paraffin-embedded Human breast cancer tissue using #42700 at dilution 1/20.

Background

This antimicrobial gene belongs to the subfamily of small cytokine CC genes. Cytokines are a family of secreted proteins involved in immunoregulatory and inflammatory processes. The CC cytokines are proteins characterized by two adjacent cysteines. The cytokine encoded by this gene displays chemotactic activity for dendritic cells, thymocytes, and activated macrophages but is inactive on peripheral blood lymphocytes and neutrophils. The product of this gene binds to chemokine receptor CCR9. Alternative splicing results in multiple transcript variants.

Note: This product is for in vitro research use only