

## CREB1 Antibody

Catalog No: #42701

Orders: [order@signalwayantibody.com](mailto:order@signalwayantibody.com)Support: [tech@signalwayantibody.com](mailto:tech@signalwayantibody.com)

## Description

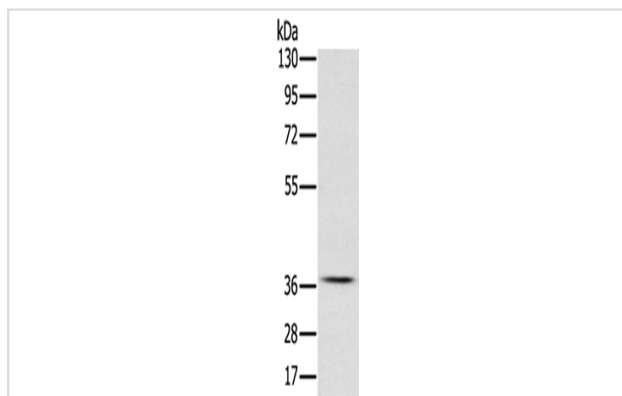
Product Name	CREB1 Antibody
Host Species	Rabbit
Clonality	Polyclonal
Purification	Antigen affinity purification.
Applications	WB
Species Reactivity	Hu Ms
Specificity	The antibody detects endogenous levels of total CREB1 protein.
Immunogen Type	protein
Immunogen Description	Fusion protein of human CREB1
Target Name	CREB1
Other Names	CREB
Accession No.	Swiss-Prot#: P16220 Gene ID: 1385
Uniprot	P16220
GeneID	1385;
Calculated MW	37kd
Concentration	1.5mg/ml
Formulation	Rabbit IgG in pH7.4 PBS, 0.05% NaN <sub>3</sub> , 40% Glycerol.
Storage	Store at -20°C

## Application Details

Western blotting: 1:200-1:1000

Immunohistochemistry: 1:20-1:100

## Images



Gel: 8%SDS-PAGE  
 Lysate: 40 µg  
 Lane: NIH/3T3 cells  
 Primary antibody: 1/350 dilution  
 Secondary antibody: Goat anti rabbit IgG at 1/8000 dilution  
 Exposure time: 20 seconds

## Background

This gene encodes a transcription factor that is a member of the leucine zipper family of DNA binding proteins. This protein binds as a homodimer to

the cAMP-responsive element, an octameric palindrome. The protein is phosphorylated by several protein kinases, and induces transcription of genes in response to hormonal stimulation of the cAMP pathway. Alternate splicing of this gene results in two transcript variants encoding different isoforms.?

---

Note: This product is for in vitro research use only