

GFAP Antibody

Catalog No: #42704

Orders: order@signalwayantibody.comSupport: tech@signalwayantibody.com

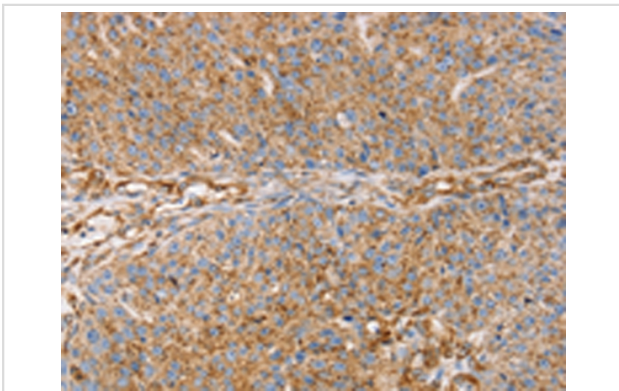
Description

Product Name	GFAP Antibody
Host Species	Rabbit
Clonality	Polyclonal
Purification	Antigen affinity purification.
Applications	IHC
Species Reactivity	Hu
Specificity	The antibody detects endogenous levels of total GFAP protein.
Immunogen Type	protein
Immunogen Description	Fusion protein of human GFAP
Target Name	GFAP
Other Names	ALXDRD
Accession No.	Swiss-Prot#: P14136Gene ID: 2670
Uniprot	P14136
GeneID	2670;
Concentration	1.4mg/ml
Formulation	Rabbit IgG in pH7.4 PBS, 0.05% NaN ₃ , 40% Glycerol.
Storage	Store at -20°C

Application Details

Immunohistochemistry: 1:25-1:100

Images



Immunohistochemical analysis of paraffin-embedded Human breast cancer tissue using #42704 at dilution 1/25,

Background

This gene encodes one of the major intermediate filament proteins of mature astrocytes. It is used as a marker to distinguish astrocytes from other glial cells during development. Mutations in this gene cause Alexander disease, a rare disorder of astrocytes in the central nervous system. Alternative splicing results in multiple transcript variants encoding distinct isoforms.

Note: This product is for in vitro research use only