

GRB2 Antibody

Catalog No: #42705

Orders: order@signalwayantibody.comSupport: tech@signalwayantibody.com

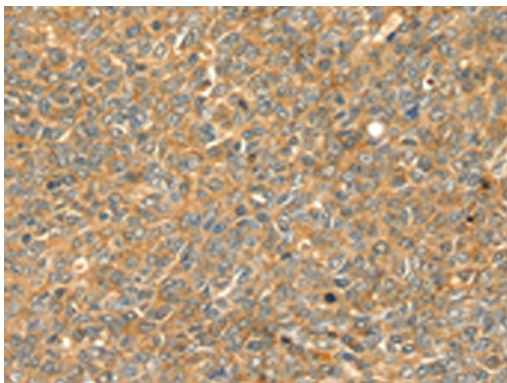
Description

Product Name	GRB2 Antibody
Host Species	Rabbit
Clonality	Polyclonal
Purification	Antigen affinity purification.
Applications	IHC
Species Reactivity	Hu Rt
Specificity	The antibody detects endogenous levels of total GRB2 protein.
Immunogen Type	protein
Immunogen Description	Full length fusion protein of human GRB2
Target Name	GRB2
Other Names	ASH; Grb3-3; MST084; NCKAP2; MSTP084; EGFRBP-GRB2
Accession No.	Swiss-Prot#: P62993 Gene ID: 2885
Uniprot	P62993
GeneID	2885;
Concentration	1.1mg/ml
Formulation	Rabbit IgG in pH7.4 PBS, 0.05% NaN ₃ , 40% Glycerol.
Storage	Store at -20°C

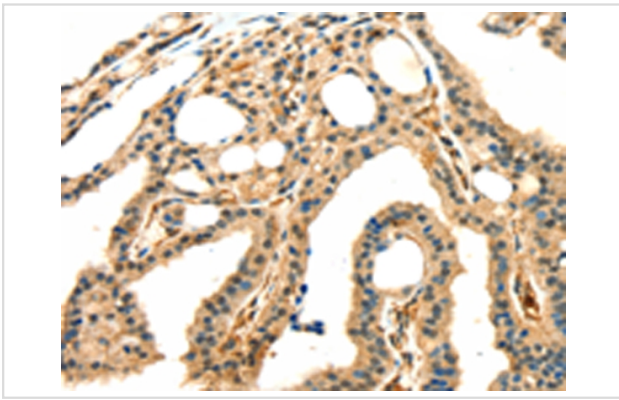
Application Details

Immunohistochemistry: 1:25-1:100

Images



Immunohistochemical analysis of paraffin-embedded Human ovarian cancer tissue using #42705 at dilution 1/20.



Immunohistochemical analysis of paraffin-embedded Human thyroid cancer tissue using #42705 at dilution 1/20.

Background

The protein encoded by this gene binds the epidermal growth factor receptor and contains one SH2 domain and two SH3 domains. Its two SH3 domains direct complex formation with proline-rich regions of other proteins, and its SH2 domain binds tyrosine phosphorylated sequences. This gene is similar to the Sem5 gene of *C.elegans*, which is involved in the signal transduction pathway. Two alternatively spliced transcript variants encoding different isoforms have been found for this gene.

Note: This product is for in vitro research use only