

PSMD10 Antibody

Catalog No: #42712

Orders: order@signalwayantibody.comSupport: tech@signalwayantibody.com

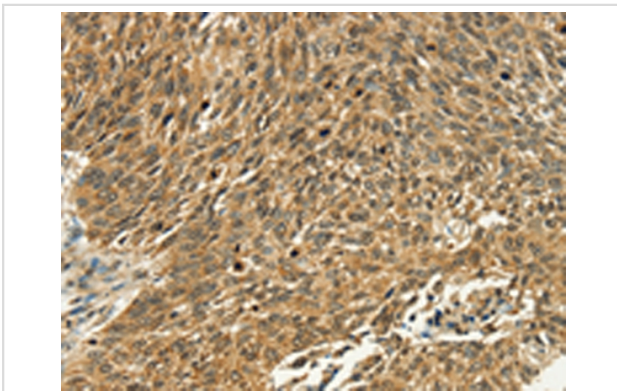
Description

Product Name	PSMD10 Antibody
Host Species	Rabbit
Clonality	Polyclonal
Purification	Antigen affinity purification.
Applications	IHC
Species Reactivity	Hu
Specificity	The antibody detects endogenous levels of total PSMD10 protein.
Immunogen Type	protein
Immunogen Description	Fusion protein of human PSMD10
Target Name	PSMD10
Other Names	p28; p28(GANK); dJ889N15.2
Accession No.	Swiss-Prot#: O75832 Gene ID: 5716
Uniprot	O75832
GeneID	5716;
Concentration	2.4mg/ml
Formulation	Rabbit IgG in pH7.4 PBS, 0.05% NaN ₃ , 40% Glycerol.
Storage	Store at -20°C

Application Details

Immunohistochemistry: 1:25-1:100

Images



Immunohistochemical analysis of paraffin-embedded Human lung cancer tissue using #42712 at dilution 1/40,

Background

This gene encodes a subunit of the PA700/19S complex, which is the regulatory component of the 26S proteasome. The 26S proteasome complex is required for ubiquitin-dependent protein degradation. This protein is a non-ATPase subunit that may be involved in protein-protein interactions. Aberrant expression of this gene may play a role in tumorigenesis. Two transcripts encoding different isoforms have been described. Pseudogenes have been identified on chromosomes 3 and 20.

Note: This product is for in vitro research use only