

DNASE1 Antibody

Catalog No: #42716

Orders: order@signalwayantibody.comSupport: tech@signalwayantibody.com

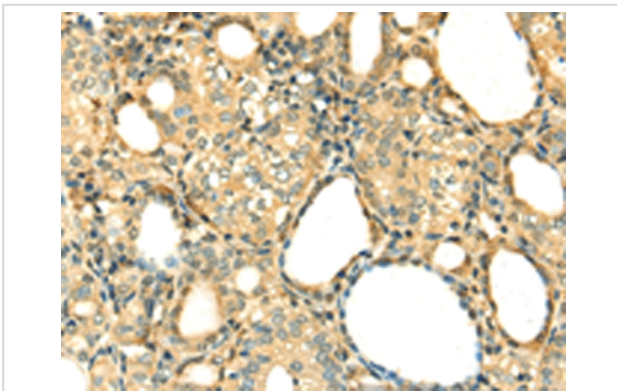
Description

Product Name	DNASE1 Antibody
Host Species	Rabbit
Clonality	Polyclonal
Purification	Antigen affinity purification.
Applications	IHC
Species Reactivity	Hu
Specificity	The antibody detects endogenous levels of total DNASE1 protein.
Immunogen Type	protein
Immunogen Description	Fusion protein of human DNASE1
Target Name	DNASE1
Other Names	DNL1; DRNI
Accession No.	Swiss-Prot#: P24855 Gene ID: 1773
Uniprot	P24855
GeneID	1773;
Concentration	1mg/ml
Formulation	Rabbit IgG in pH7.4 PBS, 0.05% NaN ₃ , 40% Glycerol.
Storage	Store at -20°C

Application Details

Immunohistochemistry: 1:20-1:100

Images



Immunohistochemical analysis of paraffin-embedded Human thyroid cancer tissue using #42716 at dilution 1/20,

Background

This gene encodes a member of the DNase family. This protein is stored in the zymogen granules of the nuclear envelope and functions by cleaving DNA in an endonucleolytic manner. At least six autosomal codominant alleles have been characterized, DNASE1*1 through DNASE1*6, and the sequence of DNASE1*2 represented in this record. Mutations in this gene have been associated with systemic lupus erythematosus (SLE), an autoimmune disease. A recombinant form of this protein is used to treat the one of the symptoms of cystic fibrosis by hydrolyzing the extracellular DNA

in sputum and reducing its viscosity. Alternate transcriptional splice variants of this gene have been observed but have not been thoroughly characterized.

Note: This product is for in vitro research use only