

## GLRX Antibody

Catalog No: #42717

Orders: order@signalwayantibody.com

Support: tech@signalwayantibody.com

## Description

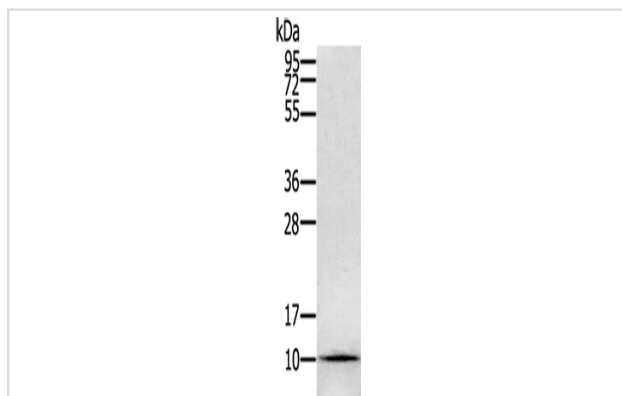
Product Name	GLRX Antibody
Host Species	Rabbit
Clonality	Polyclonal
Purification	Antigen affinity purification.
Applications	WB
Species Reactivity	Hu
Specificity	The antibody detects endogenous levels of total GLRX protein.
Immunogen Type	protein
Immunogen Description	Fusion protein of human GLRX
Target Name	GLRX
Other Names	GRX; GRX1
Accession No.	Swiss-Prot#: P35754 Gene ID: 2745
Uniprot	P35754
GeneID	2745;
Calculated MW	12kd
Concentration	2.7mg/ml
Formulation	Rabbit IgG in pH7.4 PBS, 0.05% NaN <sub>3</sub> , 40% Glycerol.
Storage	Store at -20°C

## Application Details

Western blotting: 1:500-1:2000

Immunohistochemistry: 1:20-1:100

## Images



Gel: 12%SDS-PAGE

Lysate: 40 µg

Lane: HeLa cells

Primary antibody: 1/800 dilution

Secondary antibody: Goat anti rabbit IgG at 1/8000 dilution

Exposure time: 1 minute

## Background

This gene encodes a member of the glutaredoxin family. The encoded protein is a cytoplasmic enzyme catalyzing the reversible reduction of

glutathione-protein mixed disulfides. This enzyme highly contributes to the antioxidant defense system. It is crucial for several signalling pathways by controlling the S-glutathionylation status of signalling mediators. It is involved in beta-amyloid toxicity and Alzheimer's disease.

---

Note: This product is for in vitro research use only