

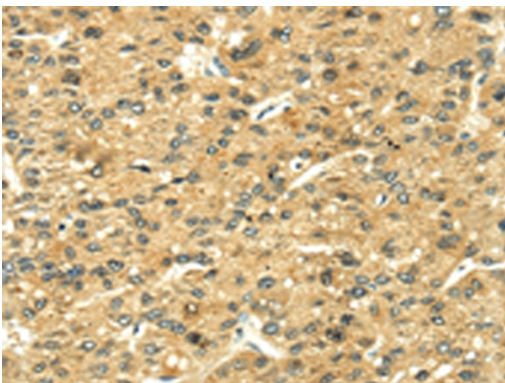
Description

Product Name	LEP Antibody
Host Species	Rabbit
Clonality	Polyclonal
Purification	Antigen affinity purification.
Applications	IHC
Species Reactivity	Hu
Specificity	The antibody detects endogenous levels of total LEP protein.
Immunogen Type	protein
Immunogen Description	Full length fusion protein of human LEP
Target Name	LEP
Other Names	OB; OBS; LEPD
Accession No.	Swiss-Prot#: P41159 Gene ID: 3952
Uniprot	P41159
GeneID	3952;
Concentration	2mg/ml
Formulation	Rabbit IgG in pH7.4 PBS, 0.05% NaN ₃ , 40% Glycerol.
Storage	Store at -20°C

Application Details

Immunohistochemistry: 1:25-1:100

Images



Immunohistochemical analysis of paraffin-embedded Human liver cancer tissue using #42718 at dilution 1/35,

Background

This gene encodes a protein that is secreted by white adipocytes, and which plays a major role in the regulation of body weight. This protein, which acts through the leptin receptor, functions as part of a signaling pathway that can inhibit food intake and/or regulate energy expenditure to maintain constancy of the adipose mass. This protein also has several endocrine functions, and is involved in the regulation of immune and inflammatory responses, hematopoiesis, angiogenesis and wound healing. Mutations in this gene and/or its regulatory regions cause severe obesity, and morbid

obesity with hypogonadism. This gene has also been linked to type 2 diabetes mellitus development.

Note: This product is for in vitro research use only