

PMP2 Antibody

Catalog No: #42723

Orders: order@signalwayantibody.com

Support: tech@signalwayantibody.com

Description

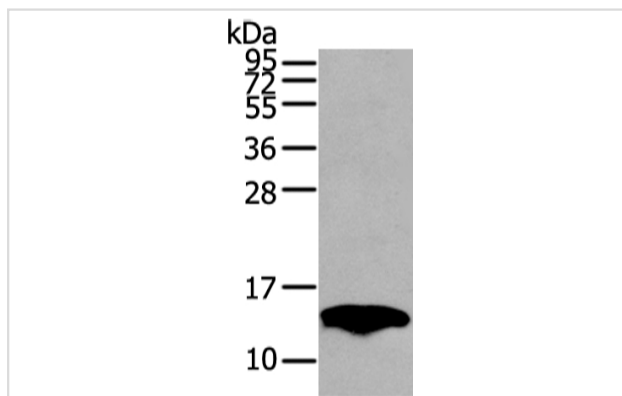
Product Name	PMP2 Antibody
Host Species	Rabbit
Clonality	Polyclonal
Purification	Antigen affinity purification.
Applications	WB IHC
Species Reactivity	Hu Ms
Specificity	The antibody detects endogenous levels of total PMP2 protein.
Immunogen Type	protein
Immunogen Description	Full length fusion protein of human PMP2
Target Name	PMP2
Other Names	P2; MP2; FABP8; M-FABP
Accession No.	Swiss-Prot#: P02689Gene ID: 5375
Uniprot	P02689
GeneID	5375;
Calculated MW	15kd
Concentration	1.4mg/ml
Formulation	Rabbit IgG in pH7.4 PBS, 0.05% NaN ₃ , 40% Glycerol.
Storage	Store at -20°C

Application Details

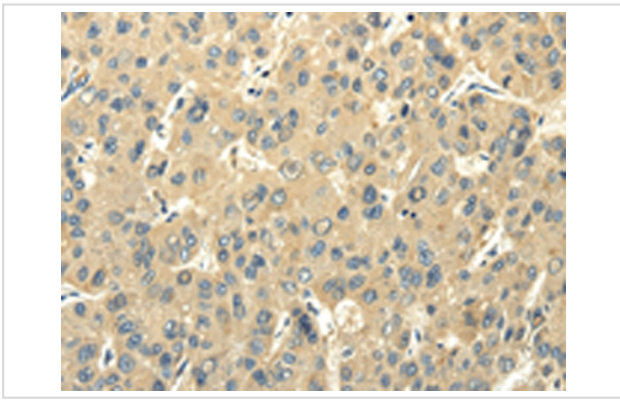
Western blotting: 1:1000-1:5000

Immunohistochemistry: 1:25-1:100

Images



Gel: 12%SDS-PAGE
Lysate: 40 µg
Lane: Mouse fat tissue
Primary antibody: 1/400 dilution
Secondary antibody: Goat anti rabbit IgG at 1/8000 dilution
Exposure time: 15 seconds



Immunohistochemical analysis of paraffin-embedded Human liver cancer tissue using #42723 at dilution 1/25,

Background

Peripheral Myelin protein-2 (PMP2, Myelin P2, MP2), a small basic enzyme, is one of the principal proteins of peripheral Myelin and presumably participates in the transport of fatty acids or the metabolism of Myelin lipids. Myelin P2 is similar in amino acid sequence and tertiary structure to fatty acid binding proteins found in the liver, adipocytes and intestine, although its expression is restricted to the nervous system.?

Note: This product is for in vitro research use only