

PTRH2 Antibody

Catalog No: #42725

Orders: order@signalwayantibody.comSupport: tech@signalwayantibody.com

Description

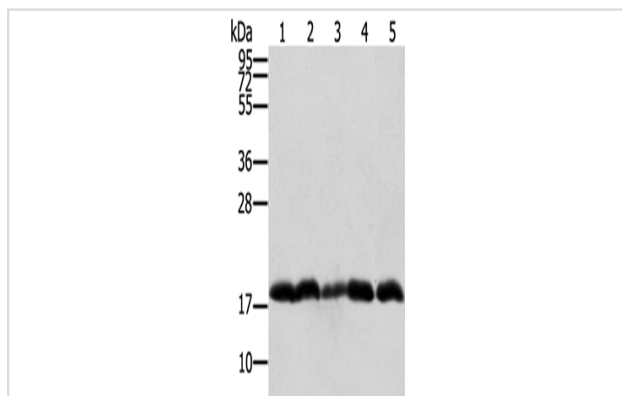
Product Name	PTRH2 Antibody
Host Species	Rabbit
Clonality	Polyclonal
Purification	Antigen affinity purification.
Applications	WB IHC
Species Reactivity	Hu
Specificity	The antibody detects endogenous levels of total PTRH2 protein.
Immunogen Type	protein
Immunogen Description	Fusion protein of human PTRH2
Target Name	PTRH2
Other Names	BIT1; PTH2; CFAP37; CGI-147
Accession No.	Swiss-Prot#: Q9Y3E5 Gene ID: 51651
Uniprot	Q9Y3E5
GeneID	51651;
Calculated MW	19kd
Concentration	0.8mg/ml
Formulation	Rabbit IgG in pH7.4 PBS, 0.05% NaN ₃ , 40% Glycerol.
Storage	Store at -20°C

Application Details

Western blotting: 1:1000-1:5000

Immunohistochemistry: 1:25-1:100

Images



Gel: 12%SDS-PAGE

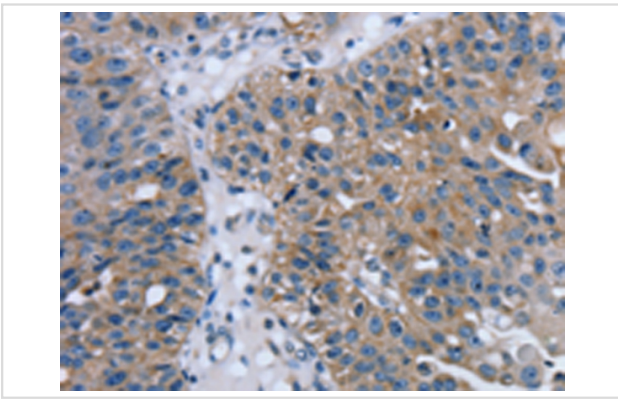
Lysate: 40 µg

Lane 1-5: Raji cells, Jurkat cells, 231 cells, hepg2 cells, K562 cells

Primary antibody: 1/250 dilution

Secondary antibody: Goat anti rabbit IgG at 1/8000 dilution

Exposure time: 20 seconds



Immunohistochemical analysis of paraffin-embedded Human breast cancer tissue using #42725 at dilution 1/20,

Background

PTRH2 (peptidyl-tRNA hydrolase 2), also known as BIT1 (Bcl-2 inhibitor of transcription 1), is a 179 amino acid mitochondrial protein. During apoptosis, PTRH2 is released from the mitochondria to the cytoplasm. Once in the cytoplasm, PTRH2 regulates the function of two transcriptional regulators, TLE5 and TLE1, thereby promoting caspase-independent cell death. It is also believed that the natural substrate for PTRH2 may be peptidyl-tRNAs, which leave the ribosomes during protein synthesis.?

Note: This product is for in vitro research use only