

RASSF1 Antibody

Catalog No: #42729

Orders: order@signalwayantibody.comSupport: tech@signalwayantibody.com

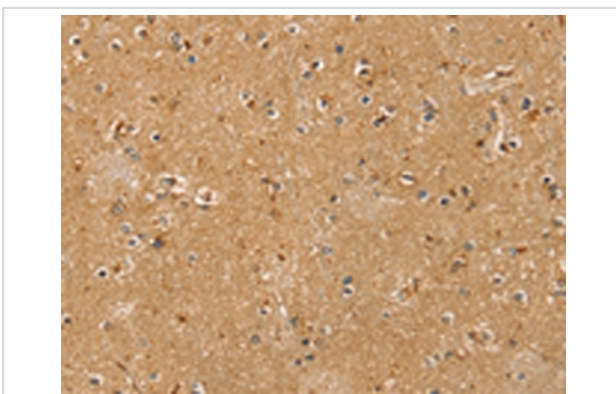
Description

Product Name	RASSF1 Antibody
Host Species	Rabbit
Clonality	Polyclonal
Purification	Antigen affinity purification.
Applications	IHC
Species Reactivity	Hu
Specificity	The antibody detects endogenous levels of total RASSF1 protein.
Immunogen Type	protein
Immunogen Description	Fusion protein of human RASSF1
Target Name	RASSF1
Other Names	123F2; RDA32; NORE2A; RASSF1A; REH3P21
Accession No.	Swiss-Prot#: Q9NS23 Gene ID: 11186
Uniprot	Q9NS23
GeneID	11186;
Concentration	1mg/ml
Formulation	Rabbit IgG in pH7.4 PBS, 0.05% NaN ₃ , 40% Glycerol.
Storage	Store at -20°C

Application Details

Immunohistochemistry: 1:10-1:50

Images



Immunohistochemical analysis of paraffin-embedded Human brain tissue using #42729 at dilution 1/20,

Background

This gene encodes a protein similar to the RAS effector proteins. Loss or altered expression of this gene has been associated with the pathogenesis of a variety of cancers, which suggests the tumor suppressor function of this gene. The inactivation of this gene was found to be correlated with the hypermethylation of its CpG-island promoter region. The encoded protein was found to interact with DNA repair protein XPA. The protein was also shown to inhibit the accumulation of cyclin D1, and thus induce cell cycle arrest. Several alternatively spliced transcript variants of this gene encoding

distinct isoforms have been reported.?

Note: This product is for in vitro research use only