

RFFL Antibody

Catalog No: #42731

Orders: order@signalwayantibody.comSupport: tech@signalwayantibody.com

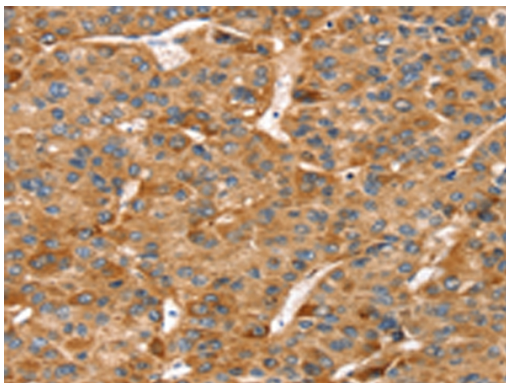
Description

Product Name	RFFL Antibody
Host Species	Rabbit
Clonality	Polyclonal
Purification	Antigen affinity purification.
Applications	IHC
Species Reactivity	Hu
Specificity	The antibody detects endogenous levels of total RFFL protein.
Immunogen Type	protein
Immunogen Description	Fusion protein of human RFFL
Target Name	RFFL
Other Names	CARP2; FRING; CARP-2; RNF189; RNF34L; RIFIFYLIN
Accession No.	Swiss-Prot#: Q8WZ73 Gene ID: 117584
Uniprot	Q8WZ73
GeneID	117584;
Concentration	1mg/ml
Formulation	Rabbit IgG in pH7.4 PBS, 0.05% NaN ₃ , 40% Glycerol.
Storage	Store at -20°C

Application Details

Immunohistochemistry: 1:25-1:100

Images



Immunohistochemical analysis of paraffin-embedded Human liver cancer tissue using #42731 at dilution 1/20,

Background

E3 ubiquitin-protein ligase that regulates several biological processes through the ubiquitin-mediated proteasomal degradation of various target proteins. Mediates 'Lys-48'-linked polyubiquitination of PRR5L and its subsequent proteasomal degradation thereby indirectly regulating cell migration through the mTORC2 complex. Also ubiquitinates the caspases CASP8 and CASP10, promoting their proteasomal degradation, to negatively regulate apoptosis downstream of death domain receptors. Also negatively regulates the tumor necrosis factor-mediated signaling pathway through targeting of

RIPK1 to ubiquitin-mediated proteasomal degradation.

Note: This product is for in vitro research use only