

## RGS1 Antibody

Catalog No: #42734

Orders: order@signalwayantibody.com

Support: tech@signalwayantibody.com

## Description

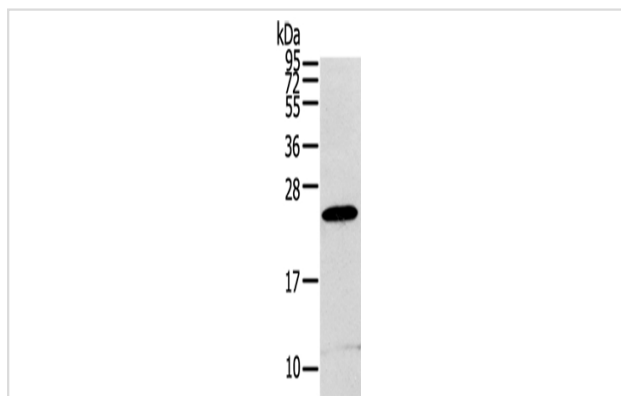
Product Name	RGS1 Antibody
Host Species	Rabbit
Clonality	Polyclonal
Purification	Antigen affinity purification.
Applications	WB IHC
Species Reactivity	Hu Ms
Specificity	The antibody detects endogenous levels of total RGS1 protein.
Immunogen Type	protein
Immunogen Description	Fusion protein of human RGS1
Target Name	RGS1
Other Names	1R20; BL34; IER1; IR20; HEL-S-87
Accession No.	Swiss-Prot#: Q08116Gene ID: 5996
Uniprot	Q08116
GeneID	5996;
Calculated MW	24kd
Concentration	1.5mg/ml
Formulation	Rabbit IgG in pH7.4 PBS, 0.05% NaN <sub>3</sub> , 40% Glycerol.
Storage	Store at -20°C

## Application Details

Western blotting: 1:500-1:2000

Immunohistochemistry: 1:25-1:100

## Images



Gel: 12%SDS-PAGE

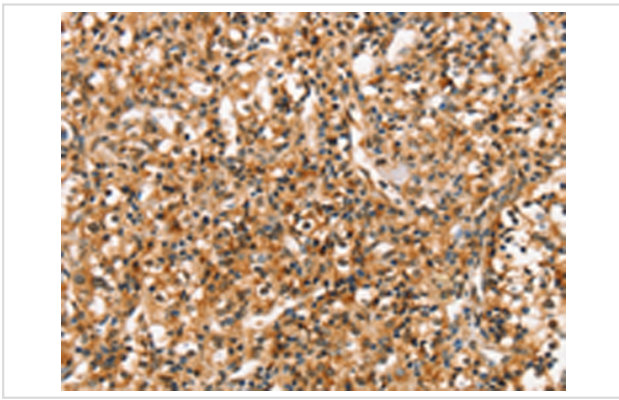
Lysate: 40 µg

Lane: RAW264.7 cells

Primary antibody: 1/400 dilution

Secondary antibody: Goat anti rabbit IgG at 1/8000 dilution

Exposure time: 2 minutes



Immunohistochemical analysis of paraffin-embedded Human prostate cancer tissue using #42734 at dilution 1/20,

## Background

This gene encodes a member of the regulator of G-protein signalling family. This protein is located on the cytosolic side of the plasma membrane and contains a conserved, 120 amino acid motif called the RGS domain. The protein attenuates the signalling activity of G-proteins by binding to activated, GTP-bound G alpha subunits and acting as a GTPase activating protein (GAP), increasing the rate of conversion of the GTP to GDP. This hydrolysis allows the G alpha subunits to bind G beta/gamma subunit heterodimers, forming inactive G-protein heterotrimers, thereby terminating the signal.

Note: This product is for in vitro research use only