

RGS22 Antibody

Catalog No: #42736

Orders: order@signalwayantibody.comSupport: tech@signalwayantibody.com

Description

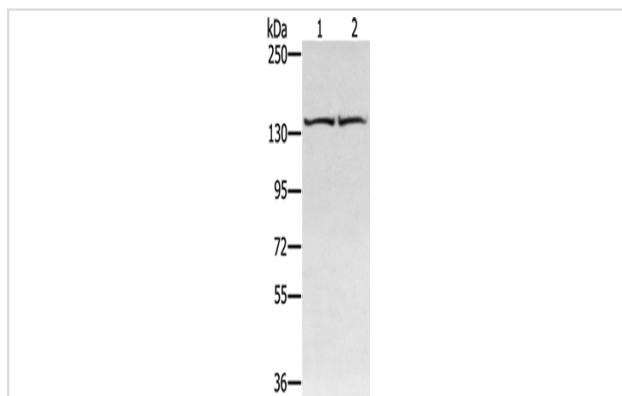
Product Name	RGS22 Antibody
Host Species	Rabbit
Clonality	Polyclonal
Purification	Antigen affinity purification.
Applications	WB IHC
Species Reactivity	Hu
Specificity	The antibody detects endogenous levels of total RGS22 protein.
Immunogen Type	protein
Immunogen Description	Fusion protein of human RGS22
Target Name	RGS22
Other Names	CT145; PRTD-NY2
Accession No.	Swiss-Prot#: Q8NE09Gene ID: 26166
Uniprot	Q8NE09
GeneID	26166;
Calculated MW	147kd
Concentration	1.8mg/ml
Formulation	Rabbit IgG in pH7.4 PBS, 0.05% NaN ₃ , 40% Glycerol.
Storage	Store at -20°C

Application Details

Western blotting: 1:500-1:2000

Immunohistochemistry: 1:25-1:100

Images



Gel: 6%SDS-PAGE

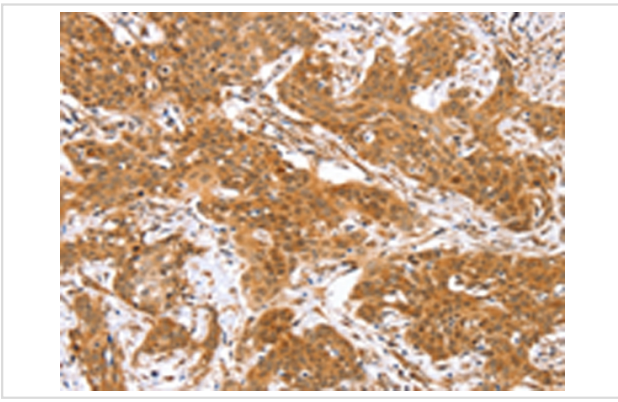
Lysate: 40 µg

Lane 1-2: Hela cells, hepg2 cells

Primary antibody: 1/400 dilution

Secondary antibody: Goat anti rabbit IgG at 1/8000 dilution

Exposure time: 20 seconds



Immunohistochemical analysis of paraffin-embedded Human cervical cancer tissue using #42736 at dilution 1/40,

Background

RGS22 (regulator of G-protein signaling 22), also known as FLJ75004, PRTD-NY2, FLJ40080, MGC102908 or DKFZp434I092, is a novel 1264 amino acid regulator of G-protein signaling specific to testis. RGS22 inhibits signal transduction and contains two isoforms as a result of alternative splicing. RGS22 is found in spermatogenic cells and Leydig cells, and may be involved in the translocation of GNA13 from the cytoplasm to the nucleus during spermiogenesis. RGS22 contains two RGS domains: RGS1 and RGS2, and the gene encoding RGS22 maps to human chromosome 8q22.2.

Note: This product is for in vitro research use only