

## RNASET2 Antibody

Catalog No: #42738

Orders: [order@signalwayantibody.com](mailto:order@signalwayantibody.com)Support: [tech@signalwayantibody.com](mailto:tech@signalwayantibody.com)

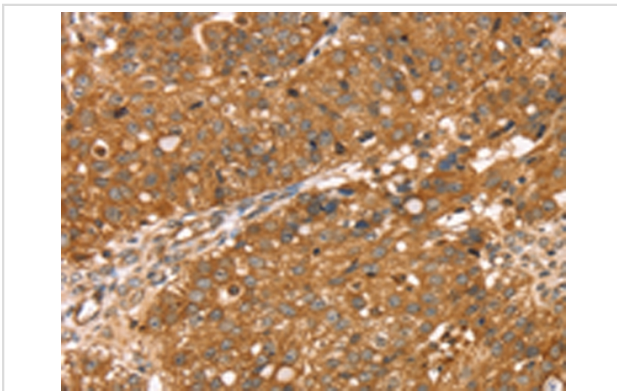
## Description

Product Name	RNASET2 Antibody
Host Species	Rabbit
Clonality	Polyclonal
Purification	Antigen affinity purification.
Applications	IHC
Species Reactivity	Hu
Specificity	The antibody detects endogenous levels of total RNASET2 protein.
Immunogen Type	protein
Immunogen Description	Fusion protein of human RNASET2
Target Name	RNASET2
Other Names	RNASE6PL; bA514O12.3
Accession No.	Swiss-Prot#: O00584 Gene ID: 8635
Uniprot	O00584
GeneID	8635;
Concentration	1.6mg/ml
Formulation	Rabbit IgG in pH7.4 PBS, 0.05% NaN <sub>3</sub> , 40% Glycerol.
Storage	Store at -20°C

## Application Details

Immunohistochemistry: 1:25-1:100

## Images



Immunohistochemical analysis of paraffin-embedded Human breast cancer tissue using #42738 at dilution 1/30,

## Background

This ribonuclease gene is a novel member of the Rh/T2/S-glycoprotein class of extracellular ribonucleases. It is a single copy gene that maps to 6q27, a region associated with human malignancies and chromosomal rearrangement.

---

Note: This product is for in vitro research use only