

RPA2 Antibody

Catalog No: #42740

Orders: order@signalwayantibody.com

Support: tech@signalwayantibody.com

Description

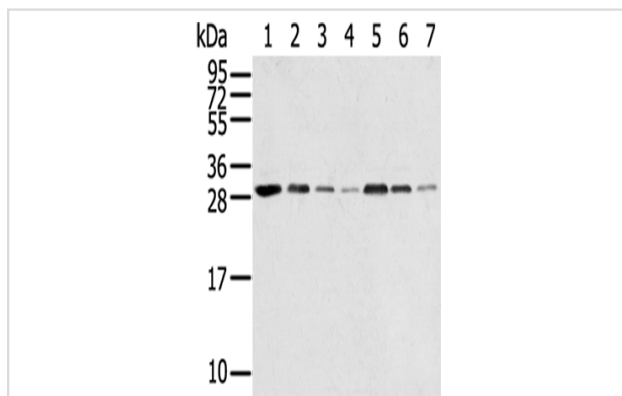
Product Name	RPA2 Antibody
Host Species	Rabbit
Clonality	Polyclonal
Purification	Antigen affinity purification.
Applications	WB IHC
Species Reactivity	Hu
Specificity	The antibody detects endogenous levels of total RPA2 protein.
Immunogen Type	protein
Immunogen Description	Full length fusion protein of human RPA2
Target Name	RPA2
Other Names	REPA2; RPA32; RP-A p32; RP-A p34
Accession No.	Swiss-Prot#: P15927 Gene ID: 6118
Uniprot	P15927
GeneID	6118;
Calculated MW	29kd
Concentration	2.6mg/ml
Formulation	Rabbit IgG in pH7.4 PBS, 0.05% NaN ₃ , 40% Glycerol.
Storage	Store at -20°C

Application Details

Western blotting: 1:500-1:2000

Immunohistochemistry: 1:25-1:100

Images



Gel: 12%SDS-PAGE

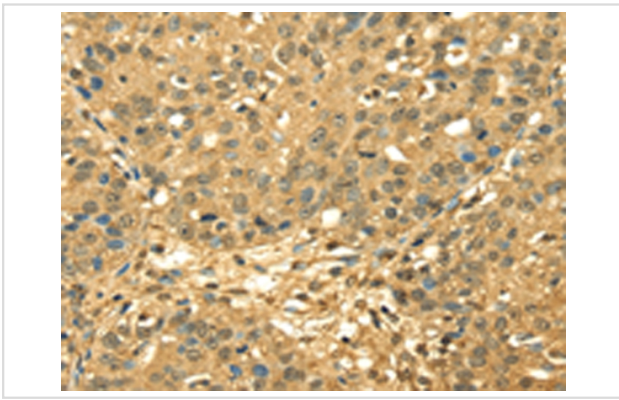
Lysate: 40 µg

Lane 1-7: HeLa cells, HUVEC cells, HepG2 cells, A549 cells,
Jurkat cells, 231 cells, A431 cells,

Primary antibody: 1/650 dilution

Secondary antibody: Goat anti rabbit IgG at 1/8000 dilution

Exposure time: 10 seconds



Immunohistochemical analysis of paraffin-embedded Human breast cancer tissue using #42740 at dilution 1/45,

Background

Replication protein A 32 kDa subunit is a protein that in humans is encoded by the RPA2 gene. As part of the heterotrimeric replication protein A complex (RPA/RP-A), binds and stabilizes single-stranded DNA intermediates, that form during DNA replication or upon DNA stress. It prevents their reannealing and in parallel, recruits and activates different proteins and complexes involved in DNA metabolism. Thereby, it plays an essential role both in DNA replication and the cellular response to DNA damage.

Note: This product is for in vitro research use only