

RPLP1 Antibody

Catalog No: #42742

Orders: order@signalwayantibody.comSupport: tech@signalwayantibody.com

Description

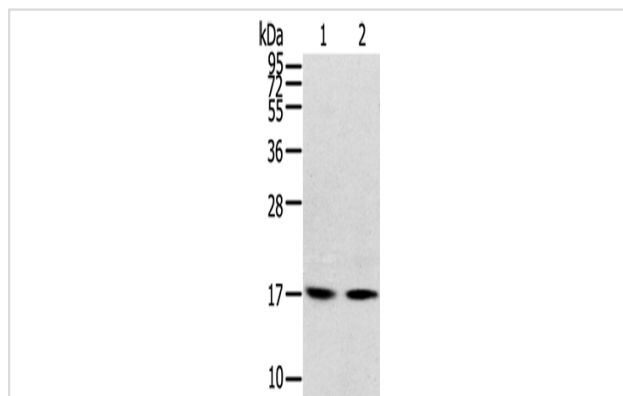
Product Name	RPLP1 Antibody
Host Species	Rabbit
Clonality	Polyclonal
Purification	Antigen affinity purification.
Applications	WB
Species Reactivity	Hu
Specificity	The antibody detects endogenous levels of total RPLP1 protein.
Immunogen Type	protein
Immunogen Description	Fusion protein of human RPLP1
Target Name	RPLP1
Other Names	P1; LP1; RPP1
Accession No.	Swiss-Prot#: P05386 Gene ID: 6176
Uniprot	P05386
GeneID	6176;
Calculated MW	12kd
Concentration	1.4mg/ml
Formulation	Rabbit IgG in pH7.4 PBS, 0.05% NaN ₃ , 40% Glycerol.
Storage	Store at -20°C

Application Details

Western blotting: 1:500-1:2000

Immunohistochemistry: 1:25-1:100

Images



Gel: 12%SDS-PAGE

Lysate: 40 µg

Lane 1-2: Human normal liver tissue, hepg2 cells

Primary antibody: 1/400 dilution

Secondary antibody: Goat anti rabbit IgG at 1/8000 dilution

Exposure time: 2 minutes

Background

Ribosomes, the organelles that catalyze protein synthesis, consist of a small 40S subunit and a large 60S subunit. Together these subunits are

composed of 4 RNA species and approximately 80 structurally distinct proteins. This gene encodes a ribosomal phosphoprotein that is a component of the 60S subunit. The protein, which is a functional equivalent of the E. coli L7/L12 ribosomal protein, belongs to the L12P family of ribosomal proteins. It plays an important role in the elongation step of protein synthesis. Unlike most ribosomal proteins, which are basic, the encoded protein is acidic.

Note: This product is for in vitro research use only