

## RPLP2 Antibody

Catalog No: #42743

Orders: order@signalwayantibody.com

Support: tech@signalwayantibody.com

## Description

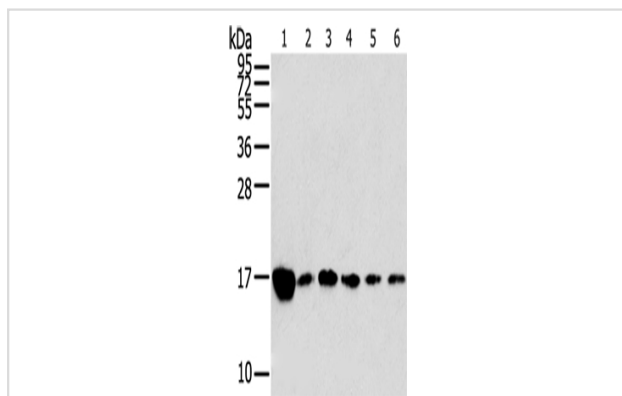
Product Name	RPLP2 Antibody
Host Species	Rabbit
Clonality	Polyclonal
Purification	Antigen affinity purification.
Applications	WB IHC
Species Reactivity	Hu
Specificity	The antibody detects endogenous levels of total RPLP2 protein.
Immunogen Type	protein
Immunogen Description	Fusion protein of human RPLP2
Target Name	RPLP2
Other Names	P2; LP2; RPP2; D11S2243E
Accession No.	Swiss-Prot#: P05387Gene ID: 6181
Uniprot	P05387
GeneID	6181;
Calculated MW	12kd
Concentration	2mg/ml
Formulation	Rabbit IgG in pH7.4 PBS, 0.05% NaN <sub>3</sub> , 40% Glycerol.
Storage	Store at -20°C

## Application Details

Western blotting: 1:1000-1:5000

Immunohistochemistry: 1:25-1:100

## Images



Gel: 12%SDS-PAGE

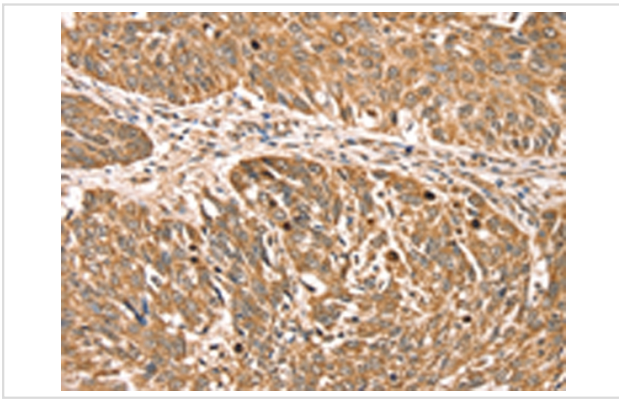
Lysate: 40 µg

Lane 1-6: Raji cells, K562 cells, A549 cells, hepg2 cells, PC3 cells, hela cells

Primary antibody: 1/800 dilution

Secondary antibody: Goat anti rabbit IgG at 1/8000 dilution

Exposure time: 30 seconds



Immunohistochemical analysis of paraffin-embedded Human lung cancer tissue using #42743 at dilution 1/35,

## Background

Ribosomes, the organelles that catalyze protein synthesis, consist of a small 40S subunit and a large 60S subunit. Together these subunits are composed of 4 RNA species and approximately 80 structurally distinct proteins. This gene encodes a ribosomal phosphoprotein that is a component of the 60S subunit. The protein, which is a functional equivalent of the *E. coli* L7/L12 ribosomal protein, belongs to the L12P family of ribosomal proteins. It plays an important role in the elongation step of protein synthesis. Unlike most ribosomal proteins, which are basic, the encoded protein is acidic.?

Note: This product is for in vitro research use only