

Description

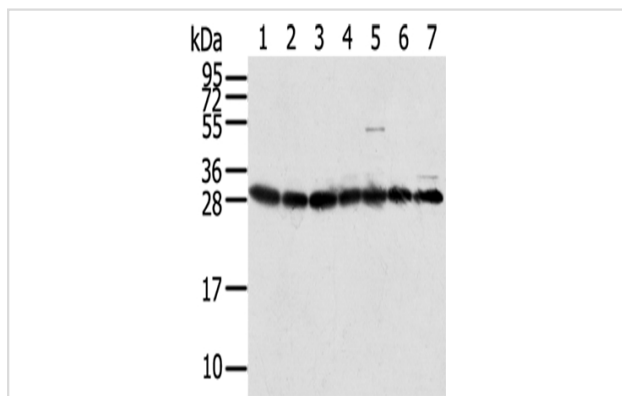
Product Name	RPS3 Antibody
Host Species	Rabbit
Clonality	Polyclonal
Purification	Antigen affinity purification.
Applications	WB IHC
Species Reactivity	Hu Ms
Specificity	The antibody detects endogenous levels of total RPS3 protein.
Immunogen Type	protein
Immunogen Description	Full length fusion protein of human RPS3
Target Name	RPS3
Other Names	S3
Accession No.	Swiss-Prot#: P23396 Gene ID: 6188
Uniprot	P23396
GeneID	6188;
Calculated MW	27kd
Concentration	1.3mg/ml
Formulation	Rabbit IgG in pH7.4 PBS, 0.05% NaN ₃ , 40% Glycerol.
Storage	Store at -20°C

Application Details

Western blotting: 1:500-1:2000

Immunohistochemistry: 1:25-1:100

Images



Gel: 12%SDS-PAGE

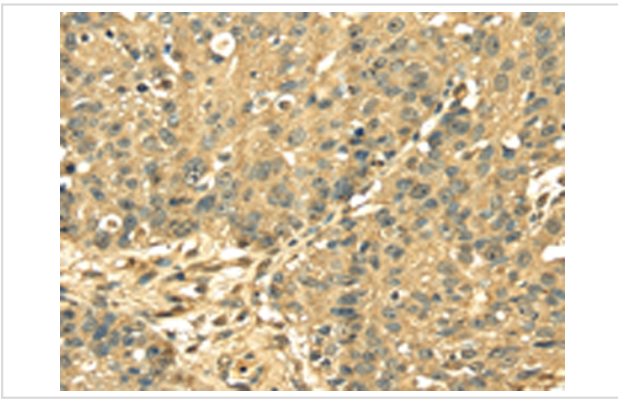
Lysate: 40 µg

Lane 1-7: HepG2 cells, Jurkat cells, HeLa cells, Raji cells,
RAW264.7 cells, A549 cells, 293T cells,

Primary antibody: 1/350 dilution

Secondary antibody: Goat anti rabbit IgG at 1/8000 dilution

Exposure time: 10 seconds



Immunohistochemical analysis of paraffin-embedded Human breast cancer tissue using #42744 at dilution 1/25,

Background

Ribosomes, the organelles that catalyze protein synthesis, consist of a small 40S subunit and a large 60S subunit. Together these subunits are composed of 4 RNA species and approximately 80 structurally distinct proteins. This gene encodes a ribosomal protein that is a component of the 40S subunit, where it forms part of the domain where translation is initiated. The protein belongs to the S3P family of ribosomal proteins. Studies of the mouse and rat proteins have demonstrated that the protein has an extraribosomal role as an endonuclease involved in the repair of UV-induced DNA damage.?

Note: This product is for in vitro research use only