

S100A12 Antibody

Catalog No: #42745

Orders: order@signalwayantibody.comSupport: tech@signalwayantibody.com

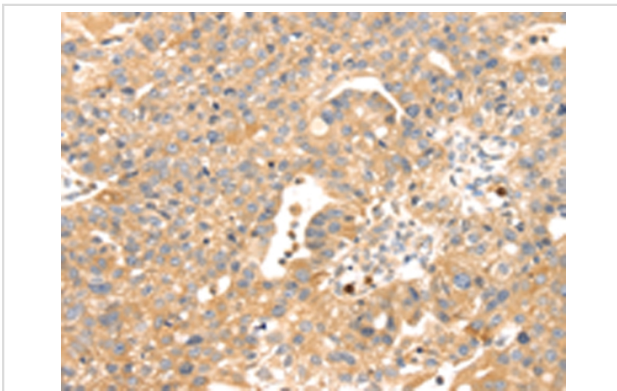
Description

| | |
|-----------------------|--|
| Product Name | S100A12 Antibody |
| Host Species | Rabbit |
| Clonality | Polyclonal |
| Purification | Antigen affinity purification. |
| Applications | IHC |
| Species Reactivity | Hu |
| Specificity | The antibody detects endogenous levels of total S100A12 protein. |
| Immunogen Type | protein |
| Immunogen Description | Fusion protein of human S100A12 |
| Target Name | S100A12 |
| Other Names | p6; CAGC; CGRP; MRP6; CAAF1; MRP-6; ENRAGE |
| Accession No. | Swiss-Prot#: P80511 Gene ID: 6283 |
| Uniprot | P80511 |
| GeneID | 6283; |
| Concentration | 2.4mg/ml |
| Formulation | Rabbit IgG in pH7.4 PBS, 0.05% NaN ₃ , 40% Glycerol. |
| Storage | Store at -20°C |

Application Details

Immunohistochemistry: 1:30-1:150

Images



Immunohistochemical analysis of paraffin-embedded Human breast cancer tissue using #42745 at dilution 1/45,

Background

The protein encoded by this gene is a member of the S100 family of proteins containing 2 EF-hand calcium-binding motifs. S100 proteins are localized in the cytoplasm and/or nucleus of a wide range of cells, and involved in the regulation of a number of cellular processes such as cell cycle progression and differentiation. S100 genes include at least 13 members which are located as a cluster on chromosome 1q21. This protein is proposed to be involved in specific calcium-dependent signal transduction pathways and its regulatory effect on cytoskeletal components may

modulate various neutrophil activities.

Note: This product is for in vitro research use only