

SDHA Antibody

Catalog No: #42746

Orders: order@signalwayantibody.com

Support: tech@signalwayantibody.com

Description

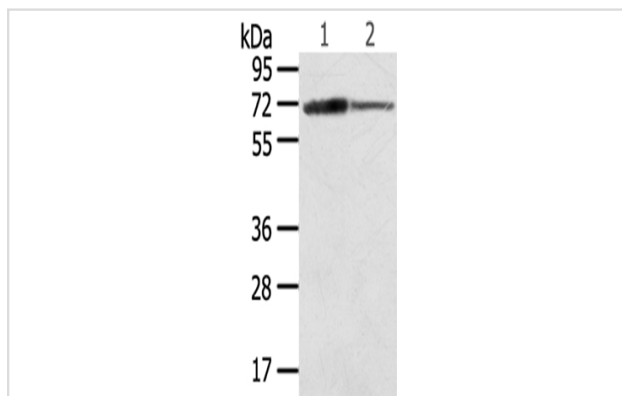
Product Name	SDHA Antibody
Host Species	Rabbit
Clonality	Polyclonal
Purification	Antigen affinity purification.
Applications	WB IHC
Species Reactivity	Hu Ms
Specificity	The antibody detects endogenous levels of total SDHA protein.
Immunogen Type	protein
Immunogen Description	Fusion protein of human SDHA
Target Name	SDHA
Other Names	FP; PGL5; SDH1; SDH2; SDHF; CMD1GG
Accession No.	Swiss-Prot#: P31040Gene ID: 6389
Uniprot	P31040
GeneID	6389;
Calculated MW	73kd
Concentration	2.4mg/ml
Formulation	Rabbit IgG in pH7.4 PBS, 0.05% NaN ₃ , 40% Glycerol.
Storage	Store at -20°C

Application Details

Western blotting: 1:200-1:1000

Immunohistochemistry: 1:25-1:100

Images



Gel: 8%SDS-PAGE

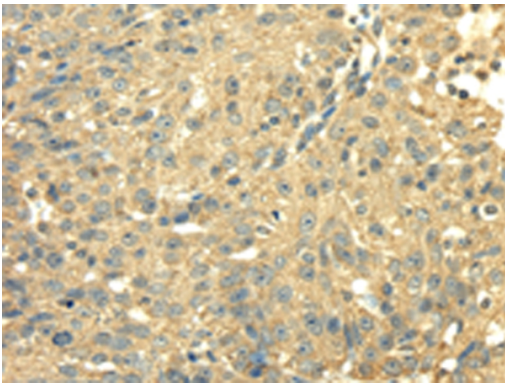
Lysate: 40 µg

Lane 1-2: Mouse heart tissue, Mouse brain tissue,

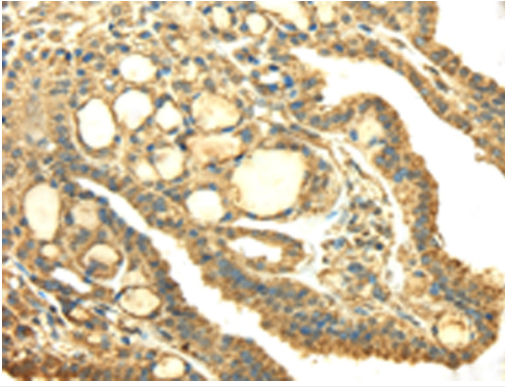
Primary antibody: 1/600 dilution

Secondary antibody: Goat anti rabbit IgG at 1/8000 dilution

Exposure time: 5 seconds



Immunohistochemical analysis of paraffin-embedded Human breast cancer tissue using #42746 at dilution 1/40.



Immunohistochemical analysis of paraffin-embedded Human thyroid cancer tissue using #42746 at dilution 1/40.

Background

This gene encodes a major catalytic subunit of succinate-ubiquinone oxidoreductase, a complex of the mitochondrial respiratory chain. The complex is composed of four nuclear-encoded subunits and is localized in the mitochondrial inner membrane. Mutations in this gene have been associated with a form of mitochondrial respiratory chain deficiency known as Leigh Syndrome. A pseudogene has been identified on chromosome 3q29.?

Note: This product is for in vitro research use only