

SENP8 Antibody

Catalog No: #42748

Orders: order@signalwayantibody.comSupport: tech@signalwayantibody.com

Description

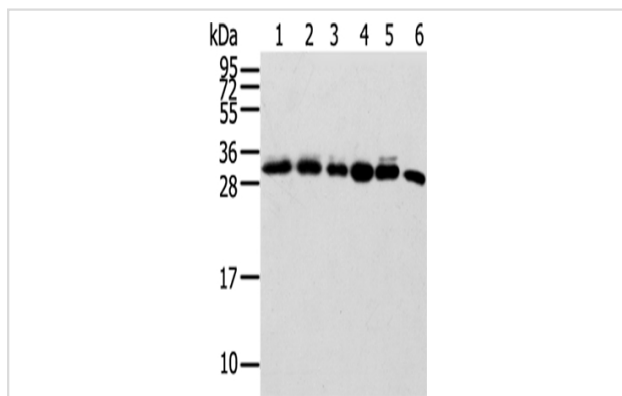
Product Name	SENP8 Antibody
Host Species	Rabbit
Clonality	Polyclonal
Purification	Antigen affinity purification.
Applications	WB IHC
Species Reactivity	Hu Ms
Specificity	The antibody detects endogenous levels of total SENP8 protein.
Immunogen Type	protein
Immunogen Description	Full length fusion protein of human SENP8
Target Name	SENP8
Other Names	DEN1; NEDP1; PRSC2
Accession No.	Swiss-Prot#: Q96LD8 Gene ID: 123228
Uniprot	Q96LD8
GeneID	123228;
Calculated MW	24kd
Concentration	2.4mg/ml
Formulation	Rabbit IgG in pH7.4 PBS, 0.05% NaN ₃ , 40% Glycerol.
Storage	Store at -20°C

Application Details

Western blotting: 1:500-1:2000

Immunohistochemistry: 1:20-1:100

Images



Gel: 12%SDS-PAGE

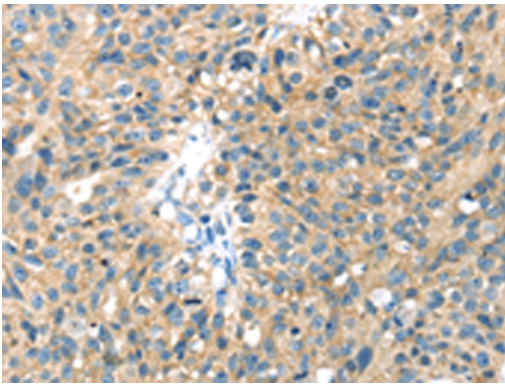
Lysate: 40 µg

Lane 1-6: 293T cells, HeLa cells, Lovo cells, Raji cells, HUEVC cells, Mouse spleen tissue,

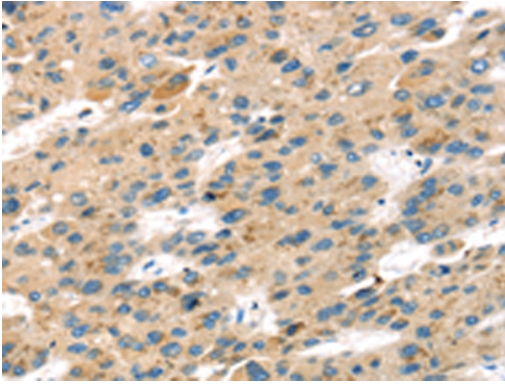
Primary antibody: 1/600 dilution

Secondary antibody: Goat anti rabbit IgG at 1/8000 dilution

Exposure time: 20 seconds



Immunohistochemical analysis of paraffin-embedded Human breast cancer tissue using #42748 at dilution 1/40.



Immunohistochemical analysis of paraffin-embedded Human liver cancer tissue using #42748 at dilution 1/40.

Background

This gene encodes a cysteine protease that is a member of the sentrin-specific protease family. The encoded protein is involved in processing and deconjugation of the ubiquitin-like protein termed, neural precursor cell expressed developmentally downregulated 8. Alternate splicing results in multiple transcript variants.

Note: This product is for in vitro research use only