

SENP2 Antibody

Catalog No: #42749

Orders: order@signalwayantibody.comSupport: tech@signalwayantibody.com

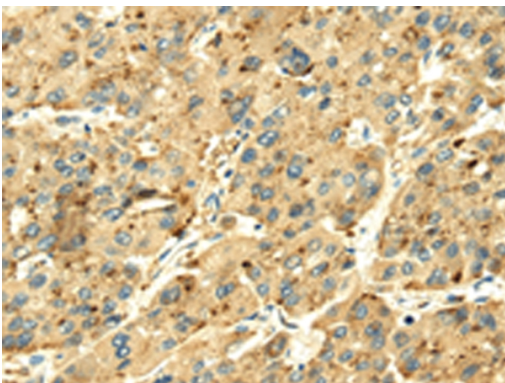
Description

Product Name	SENP2 Antibody
Host Species	Rabbit
Clonality	Polyclonal
Purification	Antigen affinity purification.
Applications	IHC
Species Reactivity	Hu
Specificity	The antibody detects endogenous levels of total SENP2 protein.
Immunogen Type	protein
Immunogen Description	Fusion protein of human SENP2
Target Name	SENP2
Other Names	AXAM2; SMT3IP2
Accession No.	Swiss-Prot#: Q9HC62Gene ID: 59343
Uniprot	Q9HC62
GeneID	59343;
Concentration	1mg/ml
Formulation	Rabbit IgG in pH7.4 PBS, 0.05% NaN ₃ , 40% Glycerol.
Storage	Store at -20°C

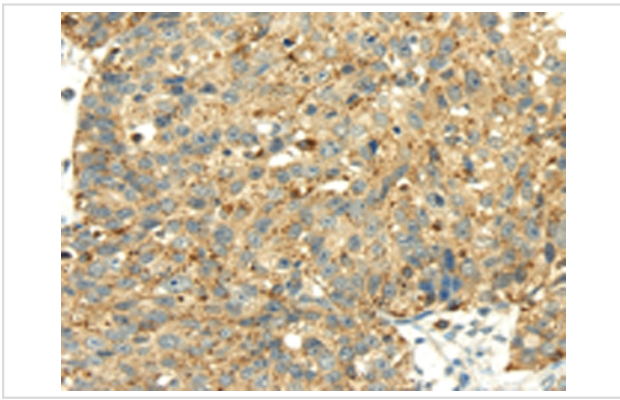
Application Details

Immunohistochemistry: 1:10-1:50

Images



Immunohistochemical analysis of paraffin-embedded Human liver cancer tissue using #42749 at dilution 1/20.



Immunohistochemical analysis of paraffin-embedded Human breast cancer tissue using #42749 at dilution 1/20.

Background

SUMO1 (UBL1; MIM 601912) is a small ubiquitin-like protein that can be covalently conjugated to other proteins. SENP2 is one of a group of enzymes that process newly synthesized SUMO1 into the conjugatable form and catalyze the deconjugation of SUMO1-containing species.

Note: This product is for in vitro research use only