

SENP7 Antibody

Catalog No: #42750

Orders: order@signalwayantibody.com

Support: tech@signalwayantibody.com

Description

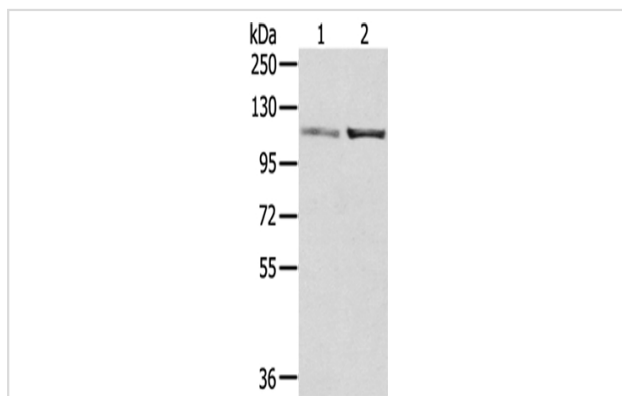
Product Name	SENP7 Antibody
Host Species	Rabbit
Clonality	Polyclonal
Purification	Antigen affinity purification.
Applications	WB
Species Reactivity	Hu
Specificity	The antibody detects endogenous levels of total SENP7 protein.
Immunogen Type	protein
Immunogen Description	Fusion protein of human SENP7
Target Name	SENP7
Other Names	KIAA1707; MGC157730; Sentrin-specific protease 7; Sentrin/SUMO-specific protease SENP7; SSP2; SUMO-1-specific protease 2
Accession No.	Swiss-Prot#: Q9BQF6 Gene ID: 57337
Uniprot	Q9BQF6
GeneID	57337;
Calculated MW	120kd
Concentration	1.9mg/ml
Formulation	Rabbit IgG in pH7.4 PBS, 0.05% NaN ₃ , 40% Glycerol.
Storage	Store at -20°C

Application Details

Western blotting: 1:1000-1:5000

Immunohistochemistry: 1:25-1:100

Images



Gel: 6%SDS-PAGE

Lysate: 40 µg

Lane 1-2: A172 cells, 231 cells,

Primary antibody: 1/800 dilution

Secondary antibody: Goat anti rabbit IgG at 1/8000 dilution

Exposure time: 30 seconds

Background

The reversible posttranslational modification of proteins by the addition of small ubiquitin-like SUMO proteins (see SUMO1; MIM 601912) is required for many cellular processes. SUMO-specific proteases, such as SENP7, process SUMO precursors to generate a C-terminal diglycine motif required for the conjugation reaction.?

Note: This product is for in vitro research use only