

SEPT2 Antibody

Catalog No: #42751

Orders: order@signalwayantibody.comSupport: tech@signalwayantibody.com

Description

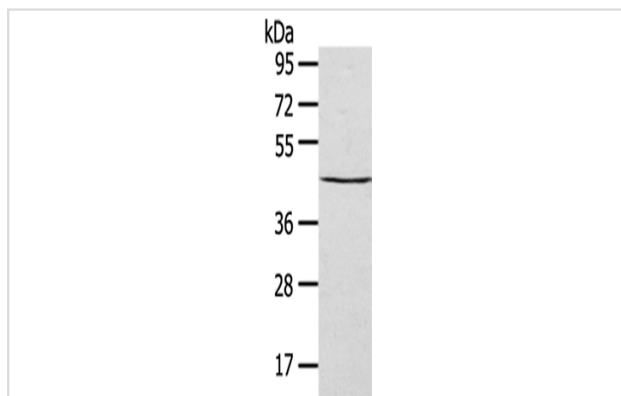
Product Name	SEPT2 Antibody
Host Species	Rabbit
Clonality	Polyclonal
Purification	Antigen affinity purification.
Applications	WB IHC
Species Reactivity	Hu
Specificity	The antibody detects endogenous levels of total SEPT2 protein.
Immunogen Type	protein
Immunogen Description	Full length fusion protein of human SEPT2
Target Name	2-Sep
Other Names	DIFF6; NEDD5; NEDD-5; Pnut13; hNedd5
Accession No.	Swiss-Prot#: Q15019Gene ID: 4735
Uniprot	Q15019
GeneID	4735;
Calculated MW	41kd
Concentration	1.6mg/ml
Formulation	Rabbit IgG in pH7.4 PBS, 0.05% NaN ₃ , 40% Glycerol.
Storage	Store at -20°C

Application Details

Western blotting: 1:200-1:1000

Immunohistochemistry: 1:25-1:100

Images



Gel: 8%SDS-PAGE

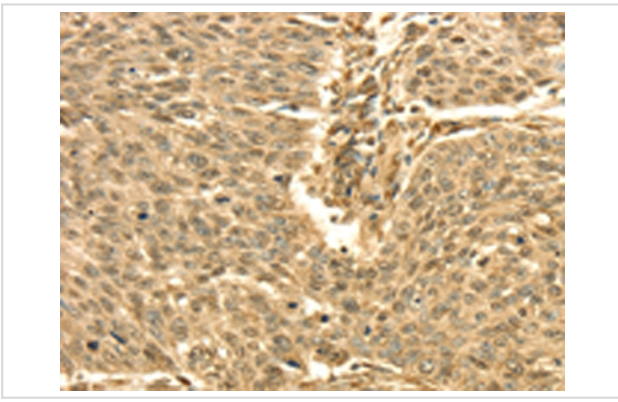
Lysate: 40 µg

Lane: HepG2 cells

Primary antibody: 1/400 dilution

Secondary antibody: Goat anti rabbit IgG at 1/8000 dilution

Exposure time: 10S



Immunohistochemical analysis of paraffin-embedded Human lung cancer tissue using #42751 at dilution 1/30,

Background

Filament-forming cytoskeletal GTPase. Required for normal organization of the actin cytoskeleton. Plays a role in the biogenesis of polarized columnar-shaped epithelium by maintaining polyglutamylated microtubules, thus facilitating efficient vesicle transport, and by impeding MAP4 binding to tubulin. Required for the progression through mitosis.?

Note: This product is for in vitro research use only