

SERPINB6 Antibody

Catalog No: #42753

Orders: order@signalwayantibody.comSupport: tech@signalwayantibody.com

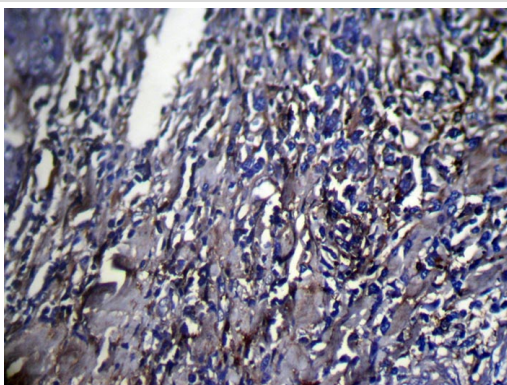
Description

Product Name	SERPINB6 Antibody
Host Species	Rabbit
Clonality	Polyclonal
Purification	Antigen affinity purification.
Applications	IHC
Species Reactivity	Hu
Specificity	The antibody detects endogenous levels of total SERPINB6 protein.
Immunogen Type	protein
Immunogen Description	Fusion protein of human SERPINB6
Target Name	SERPINB6
Other Names	CAP; PI6; PTI; PI-6; SPI3; DFNB91; MSTP057
Accession No.	Swiss-Prot#: P35237 Gene ID: 5269
Uniprot	P35237
GeneID	5269;
Concentration	1.3mg/ml
Formulation	Rabbit IgG in pH7.4 PBS, 0.05% NaN ₃ , 40% Glycerol.
Storage	Store at -20°C

Application Details

Immunohistochemistry: 1:100-1:200

Images



Immunohistochemical analysis of paraffin-embedded Human Breast cancer tissue using #42753 at dilution 1/100,

Background

The protein encoded by this gene is a member of the serpin (serine proteinase inhibitor) superfamily, and ovalbumin(ov)-serpin subfamily. It was originally discovered as a placental thrombin inhibitor. The mouse homolog was found to be expressed in the hair cells of the inner ear. Mutations in this gene are associated with nonsyndromic progressive hearing loss, suggesting that this serpin plays an important role in the inner ear in the protection against leakage of lysosomal content during stress, and that loss of this protection results in cell death and sensorineural hearing loss.

Alternatively spliced transcript variants have been found for this gene.

Note: This product is for in vitro research use only