

SRPX Antibody

Catalog No: #42756

Orders: order@signalwayantibody.com

Support: tech@signalwayantibody.com

Description

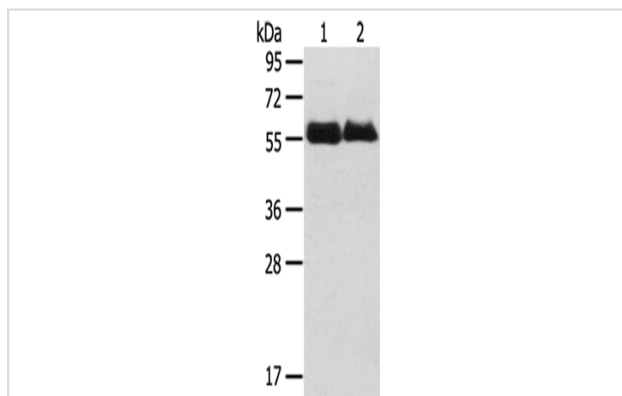
Product Name	SRPX Antibody
Host Species	Rabbit
Clonality	Polyclonal
Purification	Antigen affinity purification.
Applications	WB IHC
Species Reactivity	Hu
Specificity	The antibody detects endogenous levels of total SRPX protein.
Immunogen Type	protein
Immunogen Description	Fusion protein of human SRPX
Target Name	SRPX
Other Names	DRS; ETX1; SRPX1; HEL-S-83p
Accession No.	Swiss-Prot#: P78539Gene ID: 8406
Uniprot	P78539
GeneID	8406;
Calculated MW	52kd
Concentration	2mg/ml
Formulation	Rabbit IgG in pH7.4 PBS, 0.05% NaN ₃ , 40% Glycerol.
Storage	Store at -20°C

Application Details

Western blotting: 1:1000-1:5000

Immunohistochemistry: 1:25-1:100

Images



Gel: 8%SDS-PAGE

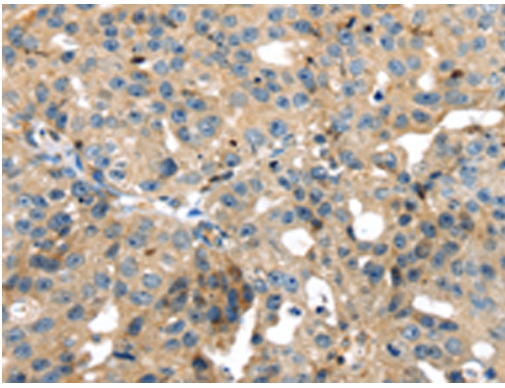
Lysate: 40 µg

Lane 1-2: Human normal kidney tissue, Human thyroid cancer tissue,

Primary antibody: 1/800 dilution

Secondary antibody: Goat anti rabbit IgG at 1/8000 dilution

Exposure time: 1 minute



Immunohistochemical analysis of paraffin-embedded Human breast cancer tissue using #42756 at dilution 1/35,

Background

SRPX gene also designated ETX1, resides within this region and is deleted in XLRP patients. There are at least two splice variants of SRPX, one of which contains a thirty amino acid signal peptide. Both variants contain three complement control protein domains, a hydrophobic region for membrane anchorage, and a cytoplasmic carboxy terminus. SRPX is expressed in retina and heart. SRPX is highly homologous to the drs (downregulated by v-src) human homolog, which suggests a role for SRPX as a tumor suppressor.

Note: This product is for in vitro research use only