

## SLC25A13 Antibody

Catalog No: #42757

Orders: order@signalwayantibody.com

Support: tech@signalwayantibody.com

## Description

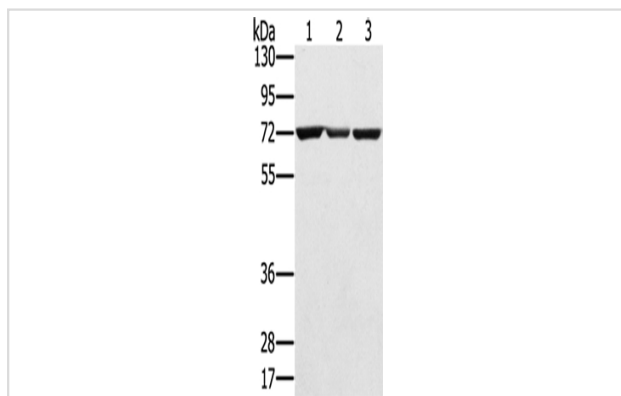
Product Name	SLC25A13 Antibody
Host Species	Rabbit
Clonality	Polyclonal
Purification	Antigen affinity purification.
Applications	WB IHC
Species Reactivity	Hu
Specificity	The antibody detects endogenous levels of total SLC25A13 protein.
Immunogen Type	protein
Immunogen Description	Fusion protein of human SLC25A13
Target Name	SLC25A13
Other Names	CTLN2; CITRIN; ARALAR2
Accession No.	Swiss-Prot#: Q9UJS0 Gene ID: 10165
Uniprot	Q9UJS0
GeneID	10165;
Calculated MW	74kd
Concentration	1.1mg/ml
Formulation	Rabbit IgG in pH7.4 PBS, 0.05% NaN <sub>3</sub> , 40% Glycerol.
Storage	Store at -20°C

## Application Details

Western blotting: 1:500-1:2000

Immunohistochemistry: 1:100-1:200

## Images



Gel: 8%SDS-PAGE

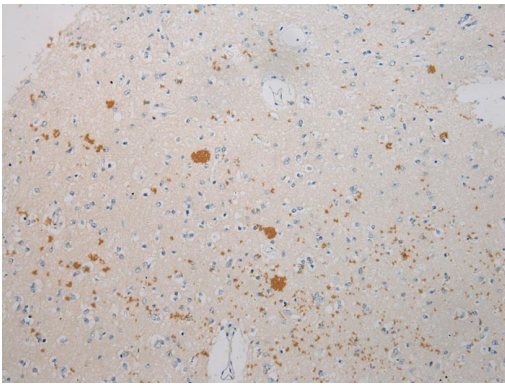
Lysate: 40 µg

Lane 1-3: Hepg2 cells, A172 cells, Raji cells

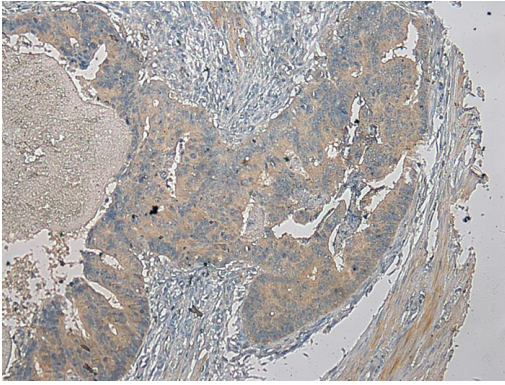
Primary antibody: 1/450 dilution

Secondary antibody: Goat anti rabbit IgG at 1/8000 dilution

Exposure time: 1 minute



Immunohistochemical analysis of paraffin-embedded Human Brain tissue using #42757 at dilution 1/100.



Immunohistochemical analysis of paraffin-embedded Human Colorectal tissue using #42757 at dilution 1/100.

## Background

This gene is a member of the mitochondrial carrier family. The encoded protein contains four EF-hand  $\text{Ca}^{2+}$  binding motifs in the N-terminal domain, and localizes to mitochondria. The protein catalyzes the exchange of aspartate for glutamate and a proton across the inner mitochondrial membrane, and is stimulated by calcium on the external side of the inner mitochondrial membrane. Mutations in this gene result in citrullinemia, type II. Multiple transcript variants encoding different isoforms have been found for this gene.?

Note: This product is for in vitro research use only