

SMYD3 Antibody

Catalog No: #42761

Orders: order@signalwayantibody.comSupport: tech@signalwayantibody.com

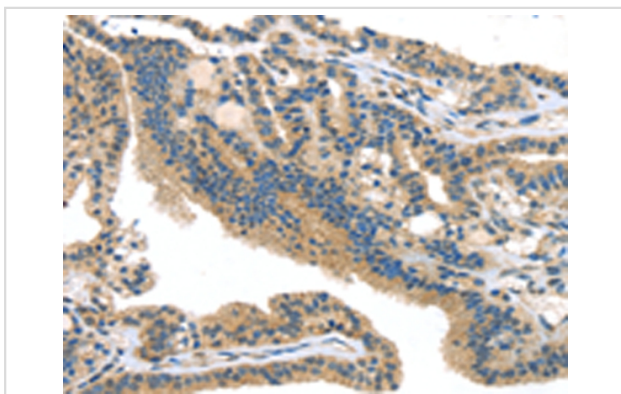
Description

Product Name	SMYD3 Antibody
Host Species	Rabbit
Clonality	Polyclonal
Purification	Antigen affinity purification.
Applications	IHC
Species Reactivity	Hu
Specificity	The antibody detects endogenous levels of total SMYD3 protein.
Immunogen Type	protein
Immunogen Description	Fusion protein of human SMYD3
Target Name	SMYD3
Other Names	KMT3E; ZMYND1; ZNFN3A1; bA74P14.1
Accession No.	Swiss-Prot#: Q9H7B4 Gene ID: 64754
Uniprot	Q9H7B4
GeneID	64754;
Concentration	1.3mg/ml
Formulation	Rabbit IgG in pH7.4 PBS, 0.05% NaN ₃ , 40% Glycerol.
Storage	Store at -20°C

Application Details

Immunohistochemistry: 1:25-1:100

Images



Immunohistochemical analysis of paraffin-embedded Human thyroid cancer tissue using #42761 at dilution 1/25,

Background

This gene encodes a histone methyltransferase which functions in RNA polymerase II complexes by an interaction with a specific RNA helicase. Multiple transcript variants encoding different isoforms have been found for this gene.

Note: This product is for in vitro research use only