

## SMARCB1 Antibody

Catalog No: #42763

Orders: order@signalwayantibody.com

Support: tech@signalwayantibody.com

## Description

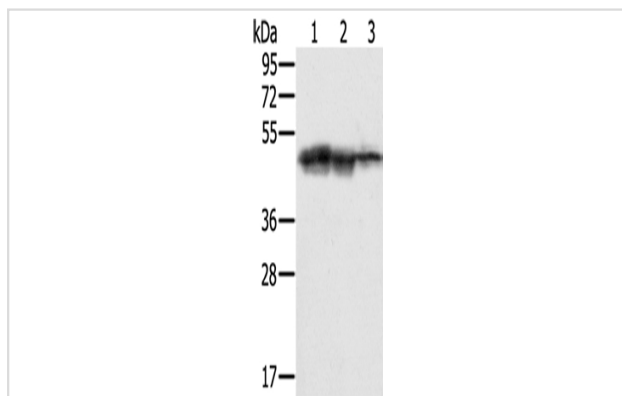
Product Name	SMARCB1 Antibody
Host Species	Rabbit
Clonality	Polyclonal
Purification	Antigen affinity purification.
Applications	WB IHC
Species Reactivity	Hu
Specificity	The antibody detects endogenous levels of total SMARCB1 protein.
Immunogen Type	protein
Immunogen Description	Fusion protein of human SMARCB1
Target Name	SMARCB1
Other Names	RDT; INI1; SNF5; Snr1; BAF47; MRD15; RTPS1; Sfh1p; hSNFS; SNF5L1; SWNTS1; PPP1R144
Accession No.	Swiss-Prot#: Q12824 Gene ID: 6598
Uniprot	Q12824
GeneID	6598;
Calculated MW	44kd
Concentration	1.6mg/ml
Formulation	Rabbit IgG in pH7.4 PBS, 0.05% NaN <sub>3</sub> , 40% Glycerol.
Storage	Store at -20°C

## Application Details

Western blotting: 1:500-1:2000

Immunohistochemistry: 1:25-1:100

## Images



Gel: 8%SDS-PAGE

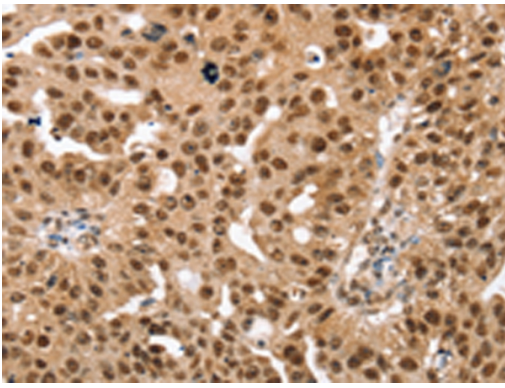
Lysate: 40 µg

Lane 1-3: Hepg2 cells, K562 cells, Jurkat cells

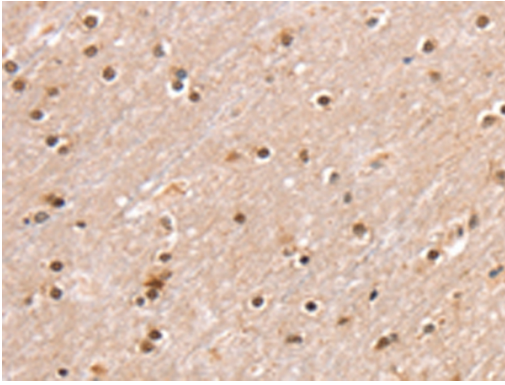
Primary antibody: 1/400 dilution

Secondary antibody: Goat anti rabbit IgG at 1/8000 dilution

Exposure time: 10 seconds



Immunohistochemical analysis of paraffin-embedded Human breast cancer tissue using #42763 at dilution 1/30.



Immunohistochemical analysis of paraffin-embedded Human brain tissue using #42763 at dilution 1/30.

## Background

The protein encoded by this gene is part of a complex that relieves repressive chromatin structures, allowing the transcriptional machinery to access its targets more effectively. The encoded nuclear protein may also bind to and enhance the DNA joining activity of HIV-1 integrase. This gene has been found to be a tumor suppressor, and mutations in it have been associated with malignant rhabdoid tumors. Two transcript variants encoding different isoforms have been found for this gene.?

Note: This product is for in vitro research use only