

SKIL Antibody

Catalog No: #42764

Orders: order@signalwayantibody.comSupport: tech@signalwayantibody.com

Description

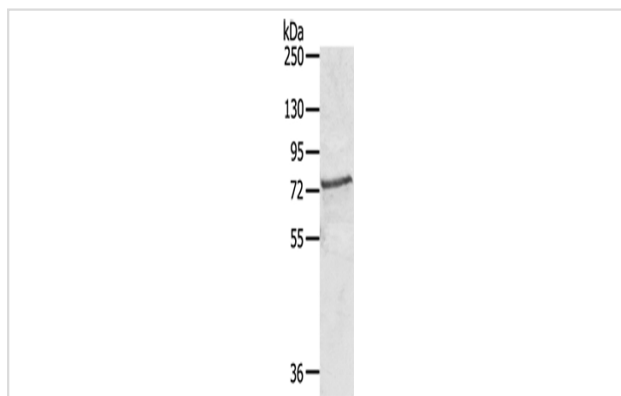
Product Name	SKIL Antibody
Host Species	Rabbit
Clonality	Polyclonal
Purification	Antigen affinity purification.
Applications	WB IHC
Species Reactivity	Hu
Specificity	The antibody detects endogenous levels of total SKIL protein.
Immunogen Type	protein
Immunogen Description	Fusion protein of human SKIL
Target Name	SKIL
Other Names	SNO; SnoA; Snol; SnoN
Accession No.	Swiss-Prot#: P12757 Gene ID: 6498
Uniprot	P12757
GeneID	6498;
Calculated MW	77kd
Concentration	1.8mg/ml
Formulation	Rabbit IgG in pH7.4 PBS, 0.05% NaN ₃ , 40% Glycerol.
Storage	Store at -20°C

Application Details

Western blotting: 1:200-1:1000

Immunohistochemistry: 1:10-1:50

Images



Gel: 6%SDS-PAGE

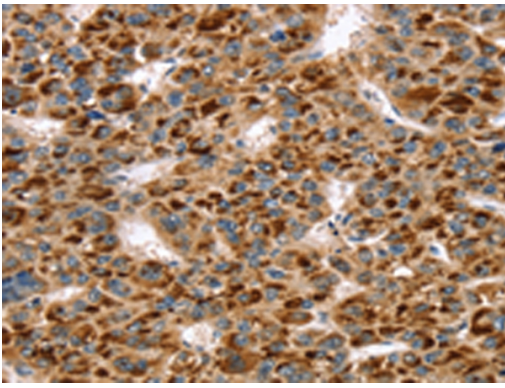
Lysate: 40 µg

Lane: Huvec cells

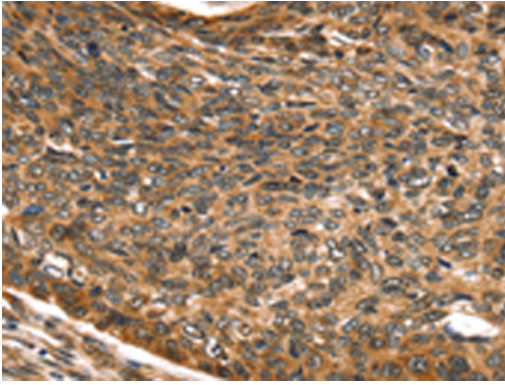
Primary antibody: 1/450 dilution

Secondary antibody: Goat anti rabbit IgG at 1/8000 dilution

Exposure time: 20 seconds



Immunohistochemical analysis of paraffin-embedded Human liver cancer tissue using #42764 at dilution 1/30.



Immunohistochemical analysis of paraffin-embedded Human esophagus cancer tissue using #42764 at dilution 1/30.

Background

The protein encoded by this gene is a component of the SMAD pathway, which regulates cell growth and differentiation through transforming growth factor-beta (TGFB). In the absence of ligand, the encoded protein binds to the promoter region of TGFB-responsive genes and recruits a nuclear repressor complex. TGFB signaling causes SMAD3 to enter the nucleus and degrade this protein, allowing these genes to be activated. Four transcript variants encoding three different isoforms have been found for this gene.

Note: This product is for in vitro research use only