

## BAP31 antibody

Catalog No: #22800

Orders: [order@signalwayantibody.com](mailto:order@signalwayantibody.com)Support: [tech@signalwayantibody.com](mailto:tech@signalwayantibody.com)

## Description

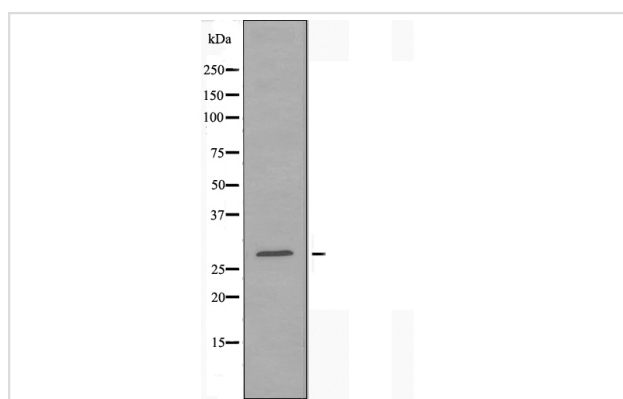
Product Name	BAP31 antibody
Host Species	Rabbit
Clonality	Polyclonal
Purification	Purified by antigen-affinity chromatography.
Applications	WB
Species Reactivity	Hu Ms Rt
Immunogen Description	A synthesized peptide derived from human BAP31
Target Name	BAP31
Accession No.	NCBI Gene ID: 10134NCBI mRNA#: NM_005745NCBI Protein#: NP_005736
Uniprot	P51572
GeneID	10134;
Concentration	1mg/ml
Formulation	Rabbit IgG in phosphate buffered saline , pH 7.4, 150mM NaCl, 0.02% sodium azide and 50% glycerol.
Storage	Store at -20°C for long term preservation (recommended). Store at 4°C for short term use.

## Application Details

Predicted MW: 28kd

Western blotting: 1:500-1:1000

## Images



Western blot analysis of extracts from HeLa cells, using BAP31 antibody.

## Background

This gene encodes a member of the B-cell receptor associated protein 31 superfamily. The encoded protein is a multi-pass transmembrane protein of the endoplasmic reticulum that is involved in the anterograde transport of membrane proteins from the endoplasmic reticulum to the Golgi and in the caspase 8-mediated apoptosis. Microdeletions in this gene are associated with the contiguous ABCD1/DXS1375E deletion syndrome. Two pseudogenes have been identified on chromosome 16. Alternatively spliced transcript variants encoding distinct isoforms have been described although the biological validity of some of the variants has not been determined. [provided by RefSeq]

---

Note: This product is for in vitro research use only