

TIMM17A Antibody

Catalog No: #42782

Orders: order@signalwayantibody.com

Support: tech@signalwayantibody.com

Description

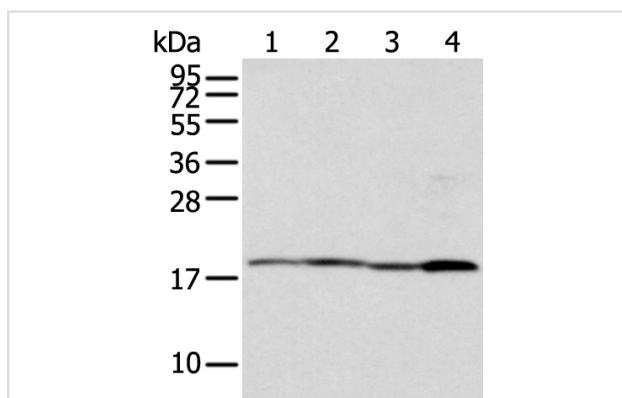
Product Name	TIMM17A Antibody
Host Species	Rabbit
Clonality	Polyclonal
Purification	Antigen affinity purification.
Applications	WB IHC
Species Reactivity	Hu Ms
Specificity	The antibody detects endogenous levels of total TIMM17A protein.
Immunogen Type	protein
Immunogen Description	Full length fusion protein of human TIMM17A
Target Name	TIMM17A
Other Names	TIM17; TIM17A
Accession No.	Swiss-Prot#: Q99595 Gene ID: 10440
Uniprot	Q99595
GeneID	10440;
Calculated MW	18kd
Concentration	1.2mg/ml
Formulation	Rabbit IgG in pH7.4 PBS, 0.05% NaN ₃ , 40% Glycerol.
Storage	Store at -20°C

Application Details

Western blotting: 1:200-1:1000

Immunohistochemistry: 1:25-1:100

Images



Gel: 12%SDS-PAGE

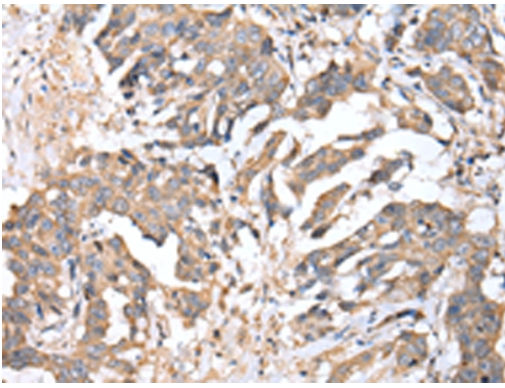
Lysate: 40 µg

Lane 1-4: RAW264.7B \times B-NIH/3T3B \times B-Hela and K-562 cell

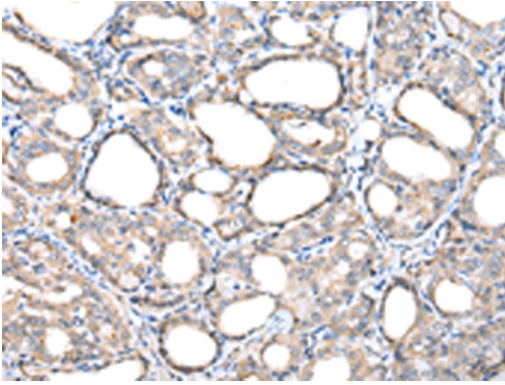
Primary antibody: 1/300 dilution

Secondary antibody: Goat anti rabbit IgG at 1/8000 dilution

Exposure time: 5 seconds



Immunohistochemical analysis of paraffin-embedded Human breast cancer tissue using #42782 at dilution 1/20.



Immunohistochemical analysis of paraffin-embedded Human thyroid cancer tissue using #42782 at dilution 1/20.

Background

Essential component of the TIM23 complex, a complex that mediates the translocation of transit peptide-containing proteins across the mitochondrial inner membrane.

Note: This product is for in vitro research use only