

## ITPA Antibody

Catalog No: #42788

Orders: order@signalwayantibody.com

Support: tech@signalwayantibody.com

## Description

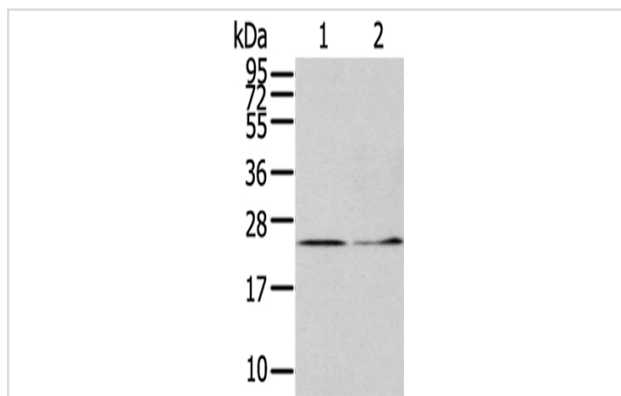
Product Name	ITPA Antibody
Host Species	Rabbit
Clonality	Polyclonal
Purification	Antigen affinity purification.
Applications	WB IHC
Species Reactivity	Hu
Specificity	The antibody detects endogenous levels of total ITPA protein.
Immunogen Type	protein
Immunogen Description	Full length fusion protein of human ITPA
Target Name	ITPA
Other Names	My049; C20orf37; dJ794I6.3; HLC14-06-P
Accession No.	Swiss-Prot#: Q9BY32Gene ID: 3704
Uniprot	Q9BY32
GeneID	3704;
Calculated MW	21kd
Concentration	1.3mg/ml
Formulation	Rabbit IgG in pH7.4 PBS, 0.05% NaN <sub>3</sub> , 40% Glycerol.
Storage	Store at -20°C

## Application Details

Western blotting: 1:200-1:1000

Immunohistochemistry: 1:25-1:100

## Images



Gel: 12%SDS-PAGE

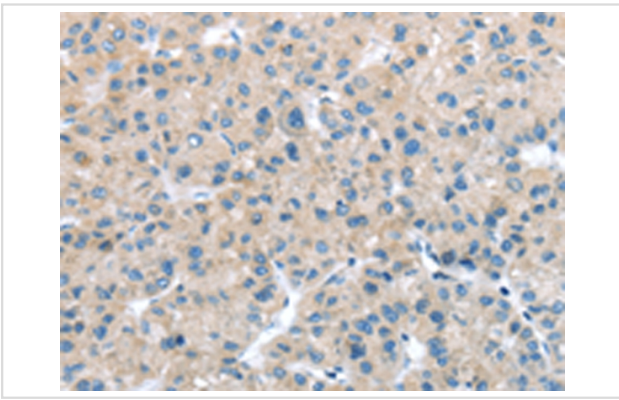
Lysate: 40 µg

Lane 1-2: Hela cells, Human fetal liver tissue,

Primary antibody: 1/400 dilution

Secondary antibody: Goat anti rabbit IgG at 1/8000 dilution

Exposure time: 5 minutes



Immunohistochemical analysis of paraffin-embedded Human liver cancer tissue using #42788 at dilution 1/25,

## Background

This gene encodes an inosine triphosphate pyrophosphohydrolase. The encoded protein hydrolyzes inosine triphosphate and deoxyinosine triphosphate to the monophosphate nucleotide and diphosphate. This protein, which is a member of the HAM1 NTPase protein family, is found in the cytoplasm and acts as a homodimer. Defects in the encoded protein can result in inosine triphosphate pyrophosphorylase deficiency which causes an accumulation of ITP in red blood cells. Alternate splicing results in multiple transcript variants.

Note: This product is for in vitro research use only