

KEAP1 Antibody

Catalog No: #42790

Orders: order@signalwayantibody.comSupport: tech@signalwayantibody.com

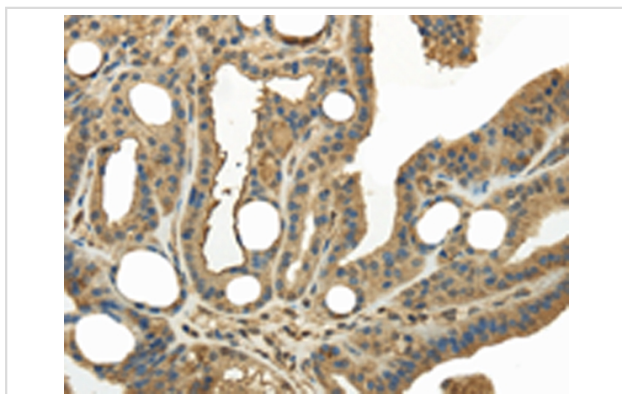
Description

Product Name	KEAP1 Antibody
Host Species	Rabbit
Clonality	Polyclonal
Purification	Antigen affinity purification.
Applications	IHC
Species Reactivity	Hu
Specificity	The antibody detects endogenous levels of total KEAP1 protein.
Immunogen Type	protein
Immunogen Description	Fusion protein of human KEAP1
Target Name	KEAP1
Other Names	INrf2; KLHL19
Accession No.	Swiss-Prot#: Q14145Gene ID: 9817
Uniprot	Q14145
GeneID	9817;
Concentration	1mg/ml
Formulation	Rabbit IgG in pH7.4 PBS, 0.05% NaN ₃ , 40% Glycerol.
Storage	Store at -20°C

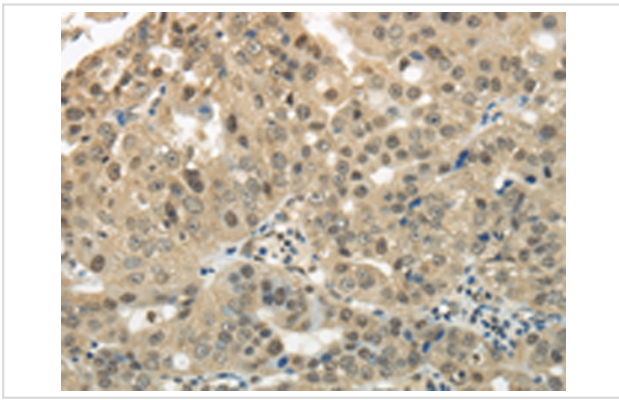
Application Details

Immunohistochemistry: 1:25-1:100

Images



Immunohistochemical analysis of paraffin-embedded Human thyroid cancer tissue using #42790 at dilution 1/20.



Immunohistochemical analysis of paraffin-embedded Human breast cancer tissue using #42790 at dilution 1/20.

Background

This gene encodes a protein containing KELCH-1 like domains, as well as a BTB/POZ domain. Kelch-like ECH-associated protein 1 interacts with NF-E2-related factor 2 in a redox-sensitive manner and the dissociation of the proteins in the cytoplasm is followed by transportation of NF-E2-related factor 2 to the nucleus. This interaction results in the expression of the catalytic subunit of gamma-glutamylcysteine synthetase. Two alternatively spliced transcript variants encoding the same isoform have been found for this gene.?

Note: This product is for in vitro research use only