

TRPC4AP Antibody

Catalog No: #42792

Orders: order@signalwayantibody.comSupport: tech@signalwayantibody.com

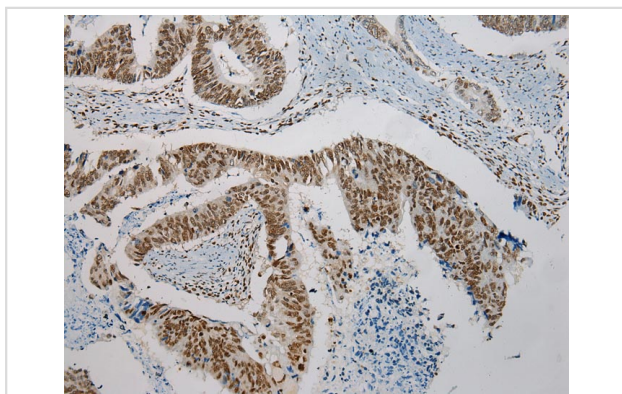
Description

Product Name	TRPC4AP Antibody
Host Species	Rabbit
Clonality	Polyclonal
Purification	Antigen affinity purification.
Applications	IHC
Species Reactivity	Hu Ms
Specificity	The antibody detects endogenous levels of total TRPC4AP protein.
Immunogen Type	protein
Immunogen Description	Fusion protein of human TRPC4AP
Target Name	TRPC4AP
Other Names	TRUSS; TRRP4AP; PPP1R158; C20orf188
Accession No.	Swiss-Prot#: Q8TEL6 Gene ID: 26133
Uniprot	Q8TEL6
GeneID	26133;
Concentration	1.4mg/ml
Formulation	Rabbit IgG in pH7.4 PBS, 0.05% NaN ₃ , 40% Glycerol.
Storage	Store at -20°C

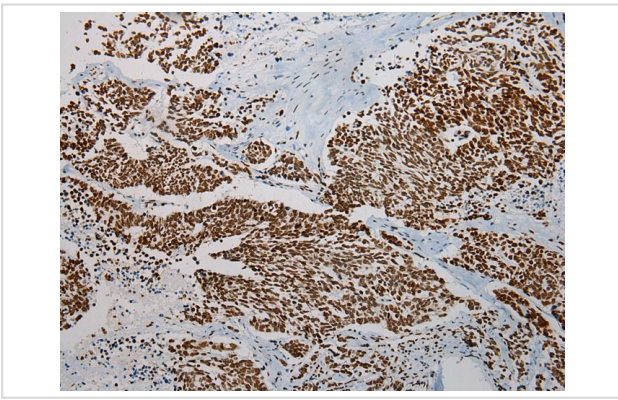
Application Details

Immunohistochemistry: 1:100-1:200

Images



Immunohistochemical analysis of paraffin-embedded Human Colorectal cancer tissue using #42792 at dilution 1/200,



Immunohistochemical analysis of paraffin-embedded Human Lung cancer tissue using #42792 at dilution 1/200,

Background

TRPC4AP (transient receptor potential cation channel, subfamily C, member 4 associated protein), also known as TRUSS or TRRP4AP, is a 797 amino acid protein that is expressed in a variety of tissues, with highest expression in liver, heart, testis and brain. Thought to function as a scaffolding protein, TRPC4AP interacts with TNF-R1 and may both link TNF-R1 to the IKK signaling complex, and participate in the activation of NFκB p50, an event that occurs in response to TNF-R1 ligation. TRPC4AP exists as multiple alternatively spliced isoforms that are encoded by a gene which maps to human chromosome 20. Comprising approximately 2% of the human genome, chromosome 20 contains nearly 63 million bases that encode over 600 genes, some of which are associated with Creutzfeldt-Jakob disease, amyotrophic lateral sclerosis, spinal muscular atrophy, ring chromosome 20 epilepsy syndrome and Alagille syndrome.

Note: This product is for in vitro research use only