

## TSSC1 Antibody

Catalog No: #42794

Orders: [order@signalwayantibody.com](mailto:order@signalwayantibody.com)Support: [tech@signalwayantibody.com](mailto:tech@signalwayantibody.com)

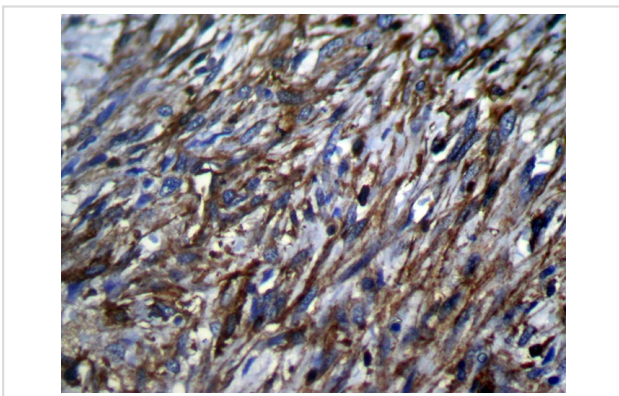
## Description

Product Name	TSSC1 Antibody
Host Species	Rabbit
Clonality	Polyclonal
Purification	Antigen affinity purification.
Applications	IHC
Species Reactivity	Hu
Specificity	The antibody detects endogenous levels of total TSSC1 protein.
Immunogen Description	Fusion protein of human TSSC1
Target Name	TSSC1
Other Names	tumor suppressing subtransferable candidate 1; Tumor-suppressing STF cDNA 1 protein
Accession No.	Swiss-Prot#: Q53HC9Gene ID: 7260
Uniprot	Q53HC9
GeneID	7260;
Concentration	1.4mg/ml
Formulation	Rabbit IgG in pH7.4 PBS, 0.05% NaN <sub>3</sub> , 40% Glycerol.
Storage	Store at -20°C

## Application Details

Immunohistochemistry: 1:100-1:200

## Images



Immunohistochemical analysis of paraffin-embedded Human Liver cancer tissue using #42794 at dilution 1/100,

## Background

This gene has been reported in PMID 9403053 as one of several tumor-suppressing subtransferable fragments located in the imprinted gene domain of 11p15.5, an important tumor-suppressor gene region. Alterations in this region have been associated with the Beckwith-Wiedemann syndrome, Wilms tumor, rhabdomyosarcoma, adrenocortical carcinoma, and lung, ovarian, and breast cancer. Alignment of this gene to genomic sequence data suggests that this gene resides on chromosome 2 rather than chromosome 11.?

---

Note: This product is for in vitro research use only