

## TUBA1C Antibody

Catalog No: #42796

Orders: [order@signalwayantibody.com](mailto:order@signalwayantibody.com)Support: [tech@signalwayantibody.com](mailto:tech@signalwayantibody.com)

## Description

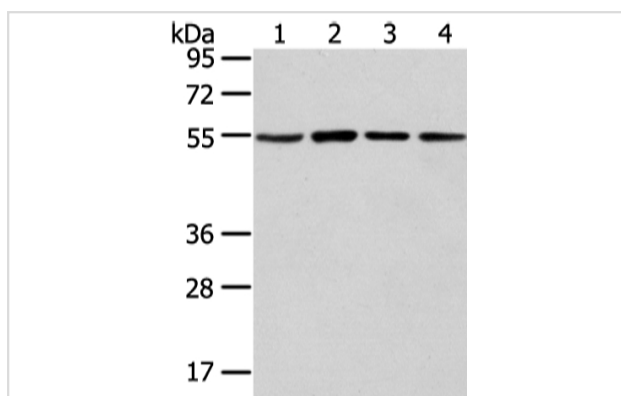
Product Name	TUBA1C Antibody
Host Species	Rabbit
Clonality	Polyclonal
Purification	Antigen affinity purification.
Applications	WB IHC
Species Reactivity	Hu Ms
Specificity	The antibody detects endogenous levels of total TUBA1C protein.
Immunogen Description	Fusion protein of human TUBA1C
Target Name	TUBA1C
Other Names	TUBA6; bcm948
Accession No.	Swiss-Prot#: Q9BQE3Gene ID: 84790
Uniprot	Q9BQE3
GeneID	84790;
Calculated MW	50kd
Concentration	1.2mg/ml
Formulation	Rabbit IgG in pH7.4 PBS, 0.05% NaN <sub>3</sub> , 40% Glycerol.
Storage	Store at -20°C

## Application Details

Western blotting: 1:500-1:2000

Immunohistochemistry: 1:100-1:200

## Images



Gel: 8%SDS-PAGE

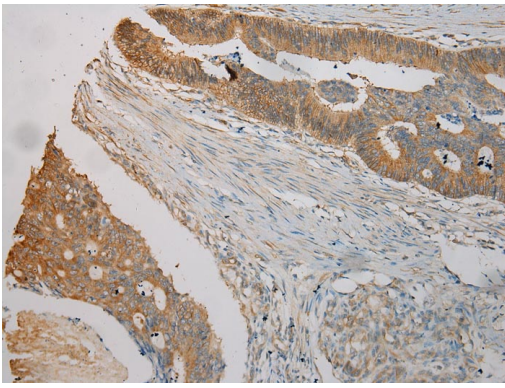
Lysate: 40 µg

Lane 1-4: NIH/3T3, K562, A431 and hela cell

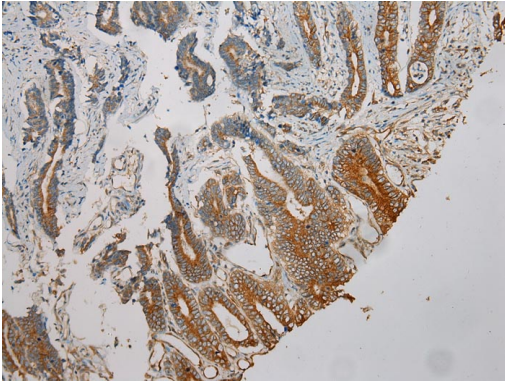
Primary antibody: 1/300 dilution

Secondary antibody: Goat anti rabbit IgG at 1/8000 dilution

Exposure time: 10 seconds



Immunohistochemical analysis of paraffin-embedded Human Colorectal cancer tissue using #42796 at dilution 1/100.



Immunohistochemical analysis of paraffin-embedded Human Gastric cancer tissue using #42796 at dilution 1/100.

## Background

Tubulin is the major constituent of microtubules. It binds two moles of GTP, one at an exchangeable site on the beta chain and one at a non-exchangeable site on the alpha chain.

Note: This product is for in vitro research use only