

UBE2B Antibody

Catalog No: #42801

Orders: order@signalwayantibody.comSupport: tech@signalwayantibody.com

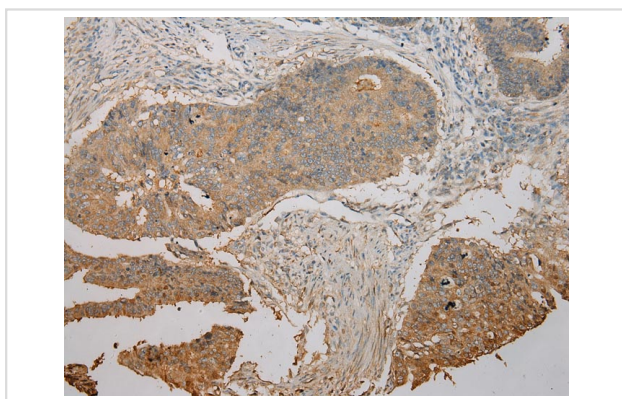
Description

Product Name	UBE2B Antibody
Host Species	Rabbit
Clonality	Polyclonal
Purification	Antigen affinity purification.
Applications	IHC
Species Reactivity	Hu Ms Rt
Specificity	The antibody detects endogenous levels of total UBE2B protein.
Immunogen Description	Full length fusion protein of human UBE2B
Target Name	UBE2B
Other Names	HR6B; UBC2; HHR6B; RAD6B; E2-17kDa
Accession No.	Swiss-Prot#: P63146Gene ID: 7320
Uniprot	P63146
GeneID	7320;
Concentration	1.7mg/ml
Formulation	Rabbit IgG in pH7.4 PBS, 0.05% NaN ₃ , 40% Glycerol.
Storage	Store at -20°C

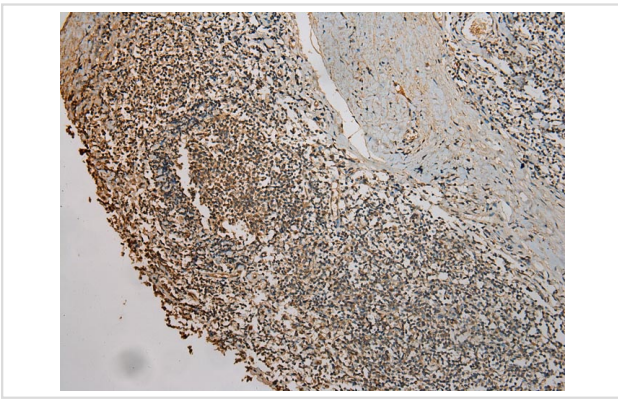
Application Details

Immunohistochemistry: 1:100-1:200

Images



Immunohistochemical analysis of paraffin-embedded Human Colorectal cancer tissue using #42801 at dilution 1/100,



Immunohistochemical analysis of paraffin-embedded Human Tonsil cancer tissue using #42801 at dilution 1/100,

Background

The modification of proteins with ubiquitin is an important cellular mechanism for targeting abnormal or short-lived proteins for degradation. Ubiquitination involves at least three classes of enzymes: ubiquitin-activating enzymes, or E1s, ubiquitin-conjugating enzymes, or E2s, and ubiquitin-protein ligases, or E3s. This gene encodes a member of the E2 ubiquitin-conjugating enzyme family. This enzyme is required for post-replicative DNA damage repair. Its protein sequence is 100% identical to the mouse, rat, and rabbit homologs, which indicates that this enzyme is highly conserved in eukaryotic evolution.

Note: This product is for in vitro research use only