

## SDHB antibody

Catalog No: #22803

Orders: order@signalwayantibody.com

Support: tech@signalwayantibody.com

## Description

Product Name	SDHB antibody
Host Species	Rabbit
Clonality	Polyclonal
Purification	Purified by antigen-affinity chromatography.
Applications	WB IF
Species Reactivity	Hu
Immunogen Type	Peptide
Immunogen Description	Synthetic peptide contain a sequence corresponding to a region within amino acids 271 and 280 of SDHB
Target Name	SDHB
Accession No.	Swiss-Prot:P21912Gene ID:6390
Uniprot	P21912
GeneID	6390;
Concentration	1mg/ml
Formulation	Supplied in 1XPBS, 40% Glycerol (pH7.0). 0.01% Thimerosal was added as a preservative.
Storage	Store at -20°C for long term preservation (recommended). Store at 4°C for short term use.

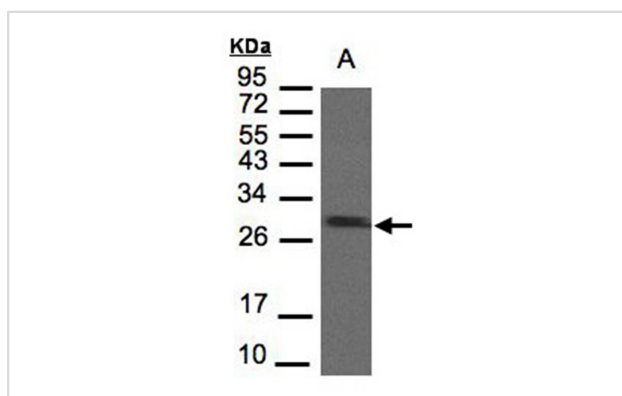
## Application Details

Predicted MW: 32kd

Western blotting: 1:500-1:3000

Immunofluorescence: 1:100-1:200

## Images

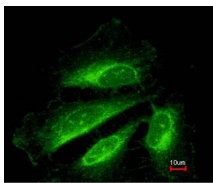


Sample(30 ug of whole cell lysate)

A: MOLT4

12% SDS PAGE

Primary antibody diluted at 1: 1000



Costained with Hoechst 33342



Immunofluorescence analysis of methanol-fixed HeLa, using SDHB antibody at 1: 200 dilution.

## Background

Complex II of the respiratory chain, which is specifically involved in the oxidation of succinate, carries electrons from FADH to CoQ. The complex is composed of four nuclear-encoded subunits and is localized in the mitochondrial inner membrane. The iron-sulfur subunit is highly conserved and contains three cysteine-rich clusters which may comprise the iron-sulfur centers of the enzyme. Sporadic and familial mutations in this gene result in paragangliomas and pheochromocytoma, and support a link between mitochondrial dysfunction and tumorigenesis. [provided by RefSeq]

Note: This product is for in vitro research use only