

MAP2 Antibody

Catalog No: #42805

Orders: order@signalwayantibody.comSupport: tech@signalwayantibody.com

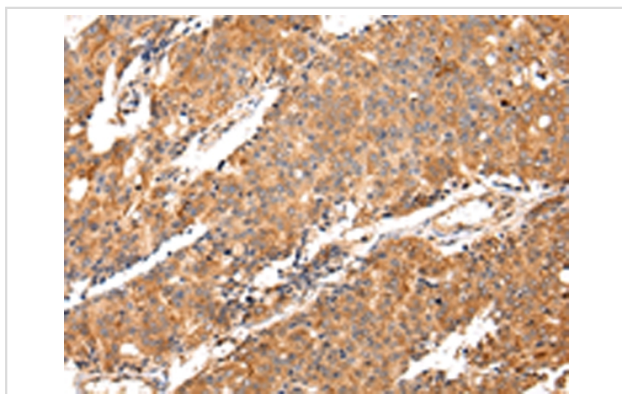
Description

Product Name	MAP2 Antibody
Host Species	Rabbit
Clonality	Polyclonal
Purification	Antigen affinity purification.
Applications	IHC
Species Reactivity	Hu
Specificity	The antibody detects endogenous levels of total MAP2 protein.
Immunogen Type	protein
Immunogen Description	Fusion protein of human MAP2
Target Name	MAP2
Other Names	MAP2A; MAP2B; MAP2C
Accession No.	Swiss-Prot#: P11137Gene ID: 4133
Uniprot	P11137
GeneID	4133;
Concentration	0.7mg/ml
Formulation	Rabbit IgG in pH7.4 PBS, 0.05% NaN ₃ , 40% Glycerol.
Storage	Store at -20°C

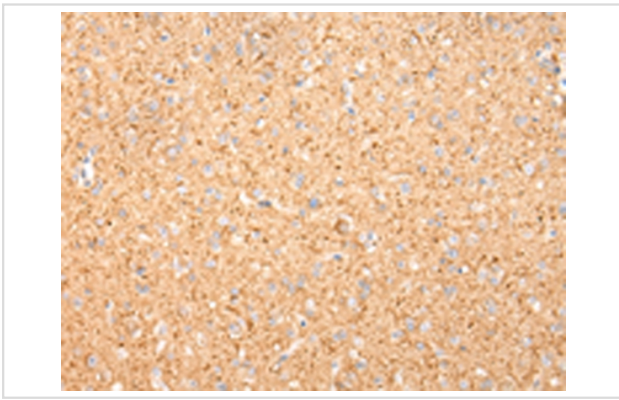
Application Details

Immunohistochemistry: 1:25-1:100

Images



Immunohistochemical analysis of paraffin-embedded Human prostate cancer tissue using #42805 at dilution 1/20.



Immunohistochemical analysis of paraffin-embedded Human brain tissue using #42805 at dilution 1/20.

Background

This gene encodes a protein that belongs to the microtubule-associated protein family. The proteins of this family are thought to be involved in microtubule assembly, which is an essential step in neurogenesis. The products of similar genes in rat and mouse are neuron-specific cytoskeletal proteins that are enriched in dendrites, implicating a role in determining and stabilizing dendritic shape during neuron development. A number of alternatively spliced variants encoding distinct isoforms have been described.

Note: This product is for in vitro research use only